

Технические характеристики

По вопросам продаж и поддержки обращайтесь:

Алматы (7273)495-231	Калининград (4012)72-03-81	Омск (3812)21-46-40	Сыктывкар (8212)25-95-17
Ангарск (3955)60-70-56	Калуга (4842)92-23-67	Орел (4862)44-53-42	Тамбов (4752)50-40-97
Архангельск (8182)63-90-72	Кемерово (3842)65-04-62	Оренбург (3532)37-68-04	Тверь (4822)63-31-35
Астрахань (8512)99-46-04	Киров (8332)68-02-04	Пенза (8412)22-31-16	Тольятти (8482)63-91-07
Барнаул (3852)73-04-60	Коломна (4966)23-41-49	Петрозаводск (8142)55-98-37	Томск (3822)98-41-53
Белгород (4722)40-23-64	Кострома (4942)77-07-48	Псков (8112)59-10-37	Тула (4872)33-79-87
Благовещенск (4162)22-76-07	Краснодар (861)203-40-90	Пермь (342)205-81-47	Тюмень (3452)66-21-18
Брянск (4832)59-03-52	Красноярск (391)204-63-61	Ростов-на-Дону (863)308-18-15	Ульяновск (8422)24-23-59
Владивосток (423)249-28-31	Курск (4712)77-13-04	Рязань (4912)46-61-64	Улан-Удэ (3012)59-97-51
Владикавказ (8672)28-90-48	Курган (3522)50-90-47	Самара (846)206-03-16	Уфа (347)229-48-12
Владимир (4922)49-43-18	Липецк (4742)52-20-81	Саранск (8342)22-96-24	Хабаровск (4212)92-98-04
Волгоград (844)278-03-48	Магнитогорск (3519)55-03-13	Санкт-Петербург (812)309-46-40	Чебоксары (8352)28-53-07
Вологда (8172)26-41-59	Москва (495)268-04-70	Саратов (845)249-38-78	Челябинск (351)202-03-61
Воронеж (473)204-51-73	Мурманск (8152)59-64-93	Севастополь (8692)22-31-93	Череповец (8202)49-02-64
Екатеринбург (343)384-55-89	Набережные Челны (8552)20-53-41	Симферополь (3652)67-13-56	Чита (3022)38-34-83
Иваново (4932)77-34-06	Нижний Новгород (831)429-08-12	Смоленск (4812)29-41-54	Якутск (4112)23-90-97
Ижевск (3412)26-03-58	Новокузнецк (3843)20-46-81	Сочи (862)225-72-31	Ярославль (4852)69-52-93
Иркутск (395)279-98-46	Ноябрьск (3496)41-32-12	Ставрополь (8652)20-65-13	
Казань (843)206-01-48	Новосибирск (383)227-86-73	Сургут (3462)77-98-35	
Россия +7(495)268-04-70	Киргизия +996(312)-96-26-47	Казахстан +7(7172)727-132	

EOC-A12 Interface cable RS-232 for KERN EOC, IOC, BIC, KIB-TM

- Cable length approx. 1,5 m

Construction

Cable length:	1	m
Dimensions (W×D×H):	335mm x 235mm x 5mm	

Category

Brand:	KERN
Category:	Interface cables

Environmental conditions

Maximum operating temperature:	60	°C
Minimum ambient temperature:	-20.0000000000000000	°C

Packaging & shipping

Delivery:	24	h
Dimensions packaging (W×D×H):	335mm x 235mm x 5mm	
Gross weight:	380	g
Net weight:	380	g

KFF-A01 Interface cable RS-232 to connect an external device



- cable length approx. 1,5 m
- Suitable for KERN KMN-T

Construction

Cable length: 1 m

Category

Brand: KERN

Category: Interface cables

Packaging & shipping

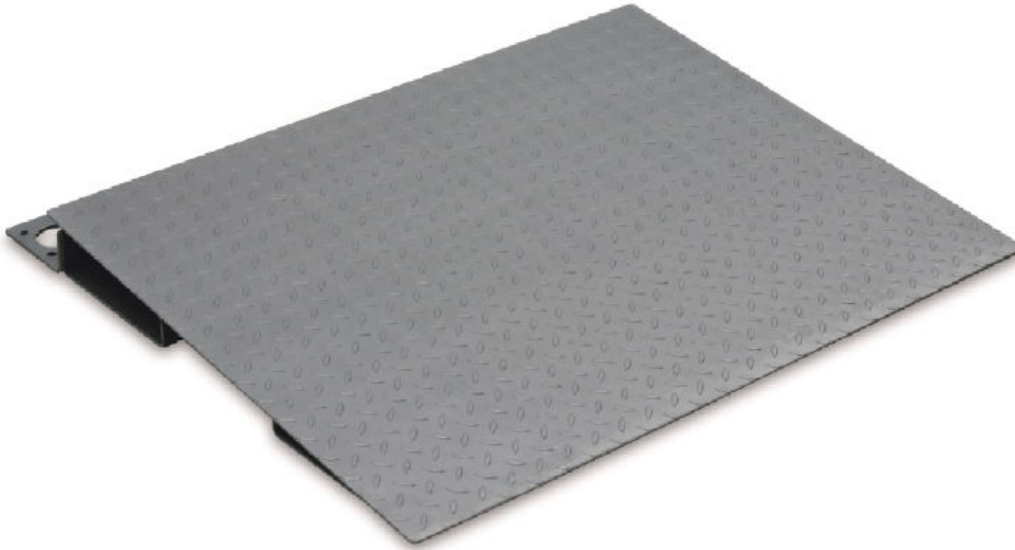
Delivery: 24 h

Dimensions packaging (W×D×H): 250mm x 100mm x 40mm

Gross weight: 80 g

Net weight: 80 g

BXS-A01 Ascending ramp for KERN BXS (W×D 1000×1000 mm)



- Suitable for KERN BXS (for models with weighing plate size W×D 1000×1000 mm)
- Material:
- Note: For verified models the weighing bridge must be fixed to the floor. Optionally by two ascending ramps or two pairs of base plates or by a combination of these two options.

Construction

Dimensions (W×D×H): 1000mm x 840mm x 85mm

Dimensions of weighing plate (W×D×H): 1000mm | 840mm | 85mm

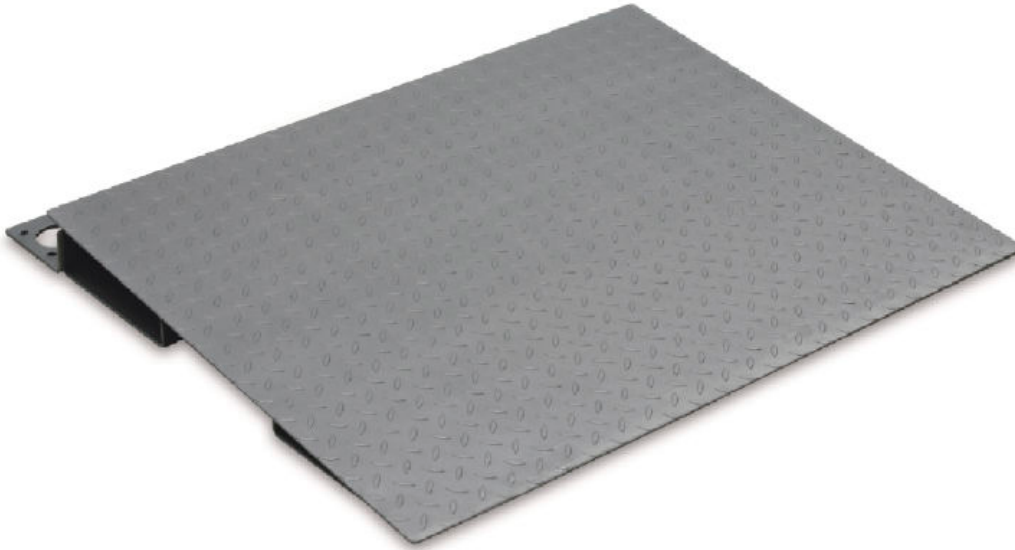
Category

Brand: KERN
Category: Ramps
Product Group: Ascending ramp

Packaging & shipping

Delivery:	48	h
Dimensions packaging (W×D×H):	1000mm x 1285mm x 230mm	
Gross weight:	74	kg
Net weight:	46	kg

BXS-A02 Ascending ramp for KERN BXS (W×D 1500×1250 mm)



- Suitable for KERN BXS (for models with weighing plate size W×D 1500×1250 mm)
- Material:
- Note: For verified models the weighing bridge must be fixed to the floor. Optionally by two ascending ramps or two pairs of base plates or by a combination of these two options.

Construction

Dimensions (W×D×H): 1250mm x 840mm x 85mm

Dimensions of weighing plate (W×D×H): 1250mm | 840mm | 85mm

Category

Brand: KERN
Category: Ramps
Product Group: Ascending ramp

Packaging & shipping

Delivery:	48	h
Dimensions packaging (W×D×H):	1000mm x 1285mm x 230mm	
Gross weight:	74	kg
Net weight:	58	kg

PCD-A04 Rechargeable battery pack internal for KERN PCD



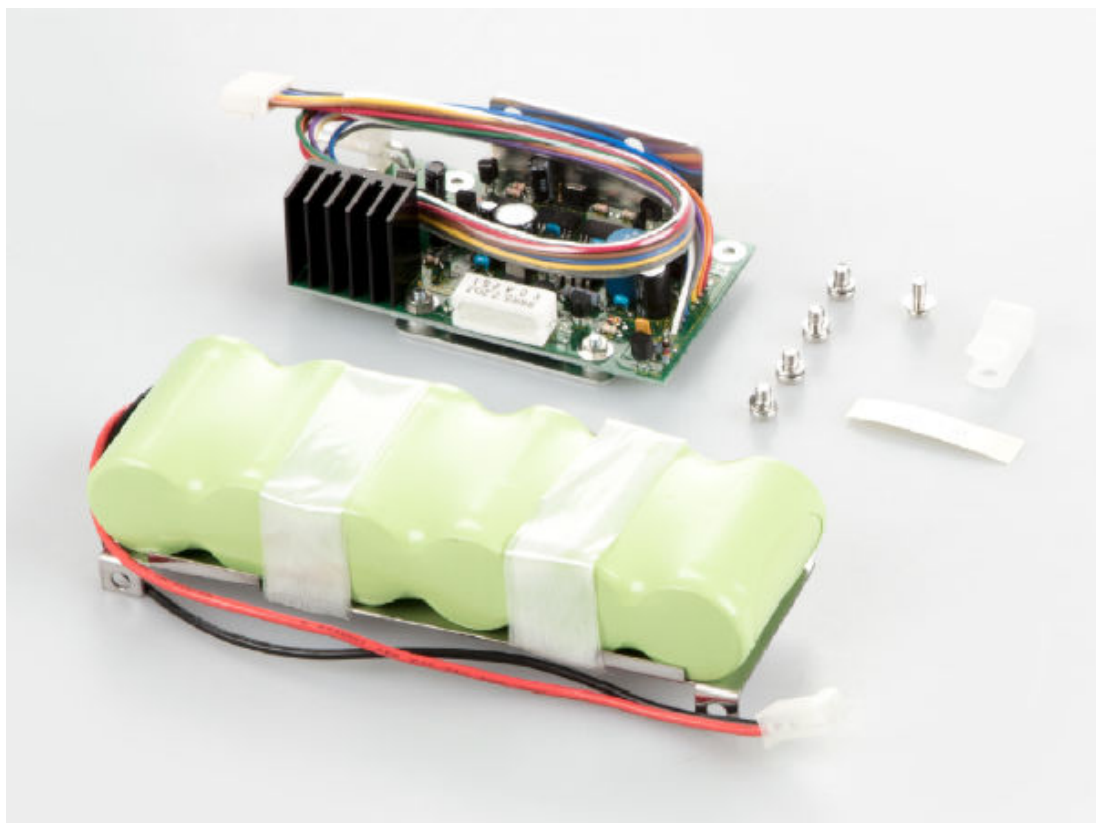
Category


Brand:	KERN
Category:	Batteries and rechargeable battery packs
Product Group:	Operation by rechargeable battery pack

Packaging & shipping

Delivery:	24	h
Dimensions packaging (W×D×H):	110mm x 85mm x 45mm	
Gross weight:	220	g
Net weight:	180	g
Shipping method:	Parcel service	

PES-A01 Rechargeable battery pack internal for KERN PES



- Suitable for precision balance KERN PES/PEJ
-  must be ordered at purchase

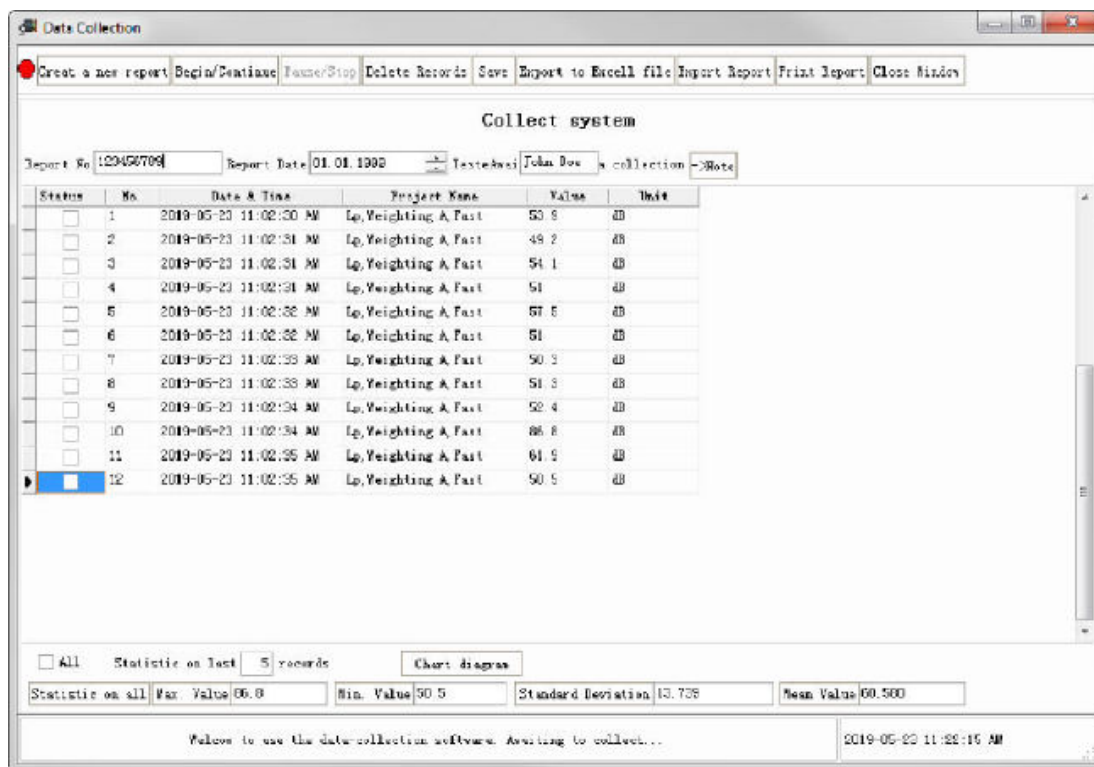
Category

Brand: KERN
Category: Batteries and rechargeable battery packs
Product Group: Operation by rechargeable battery pack

Packaging & shipping

Delivery:	24	h
Dimensions packaging (W×D×H):	110mm x 60mm x 32mm	
Gross weight:	650	g
Net weight:	545	g
Shipping method:	Parcel service	

ATC-01 Data transfer software for SAUTER TC, TE, TF, TG, SU, HD, TD



- Ideal for transferring measuring data from the internal data memory of the measuring instrument to MS Excel
- Data transfer software interface cable included
- Suitable for
 - Coating thickness gauges SAUTER TC, SAUTER TE, SAUTER TF and SAUTER TG
 - Hardness tester SAUTER HD
 - Sound level meter SAUTER SU
 - Ultrasonic thickness gauge SAUTER TD-US
- Compatible with the following operating systems: Microsoft Windows 7/8.1/10

Category

Brand: Sauter
 Category: Software
 Product Group: Software

Packaging & shipping

Delivery: 24 h
 Dimensions packaging (W×D×H): 1mm x 1mm x 1mm
 Gross weight: 60 g
 Net weight: 50 g

ATU-04 Data transfer software, interface cable included

Category

Brand:	Sauter
Category:	Software
Product Group:	Software

Packaging & shipping

Delivery:	24	h
Dimensions packaging (W×D×H):	150mm x 210mm x 10mm	
Gross weight:	52	g
Net weight:	50	g

IXS-A03 Stand, approx. 400 mm, for IXS



- Stand to elevate display device
- must be ordered at purchase
- Height of stand approx. 400 mm
- Suitable for platform scale KERN IXS (only for models with weighing plate size W×D 400×300 mm, 500×400 mm and 650×500 mm; not for KERN IXS 30K-3)

Construction

Height of stand: 40 cm

Category

Brand: KERN
Category: Stands
Product Group: Column

Packaging & shipping

Delivery: 24 h
Dimensions packaging (W×D×H): 415mm x 195mm x 145mm
Gross weight: 1 kg
Net weight: 1 kg

MWA-A02 Practical holding bracket for wheelchair platform scale KERN MWA



- Handrail, without column, cannot be folded, for self-assembly on the MWA 300K-1M or KERN MWA 300K-1PM

Construction

Dimensions (W×D×H): 560mm x 40mm x 920mm

Height of stand: 1 m

Category

Brand: KERN

Category: Stands

Packaging & shipping

Delivery: 24 h

Dimensions packaging (W×D×H): 930mm x 640mm x 100mm

Gross weight: 4 kg

Net weight: 4 kg

PCD-A03 Stand for KERN PCD



Construction

Dimensions (W×D×H): 195mm x 195mm x 250mm
Height of stand: 25 cm

Category

Brand: KERN
Category: Stands
Product Group: Column

Packaging & shipping

Delivery: 24 h
Dimensions packaging (W×D×H): 220mm x 220mm x 210mm
Gross weight: 1 kg
Net weight: 500 g

SFE-A01 Stand for KERN SFE



- Stand to elevate display device
- height of stand approx. 200 mm
- Suitable for IP protected platform scale KERN SFE

Construction

Height of stand: 20 cm

Category

Brand: KERN
Category: Stands
Product Group: Column

Packaging & shipping

Delivery: 24 h
Dimensions packaging (W×D×H): 195mm x 250mm x 85mm
Gross weight: 698 g
Net weight: 586 g

SFE-A02 Stand for KERN SFE ($\geq 400 \times 300 \times 130$ mm)



- Stand to elevate display device
- height of stand approx. 400 mm
- Suitable for IP protected platform scale KERN SFE (for models with weighing plate size $\geq 400 \times 300 \times 130$ mm)

Construction

Height of stand: 40 cm

Category

Brand: KERN
Category: Stands
Product Group: Column

Packaging & shipping

Delivery: 24 h
Dimensions packaging (W×D×H): 440mm x 180mm x 95mm
Gross weight: 1 kg
Net weight: 810 g

SFE-A03 Stand for KERN SFE (≥ 500×400×140 mm)



- Stand to elevate display device
- height of stand approx. 600 mm
- Suitable for IP protected platform scale KERN SFE (for models with weighing plate size ≥ 500×400×140 mm)

Construction

Height of stand: 60 cm

Category

Brand: KERN
Category: Stands
Product Group: Column

Packaging & shipping

Delivery: 24 h
Dimensions packaging (W×D×H): 180mm x 640mm x 148mm
Gross weight: 1 kg
Net weight: 1 kg

MWA-A04 Grab bar set with folding patient seat for wheelchair scale KERN MWA



- 2 Handrail with folding patient seat, for self-assembly on the KERN MWA 300K-1M wheelchair platform scale, Factory Option, please order when ordering your balance, fitting it at a later date is not possible
- With the two practical handrails with the integrated, folding patient seat, you can convert the KERN MWA 300K-1M wheelchair platform scale into a multi-functional scale quickly and easily. In this way patients can be weighed standing up, with support from the handrail or in a comfortable seated position. If you fold the patient seat up, then a wheelchair can be pushed or driven onto the scale. The strut rod included with delivery ensures a high level of stability and torsional rigidity. The drive-through protection which is also fitted as standard for the front wheels of the wheelchair gives an extra level of safety
- Material:
- Overall dimensions W×D×H 470×310×460 mm

Construction

Dimensions (W×D×H):	470mm x 310mm x 460mm	
Height of stand:	1	m
Overall dimensions mounted (W×D×H): 1015mm x 970mm x 750mm		

Category

Brand:	KERN
Category:	Stands

Packaging & shipping

Delivery:	48	h
Dimensions packaging (W×D×H):	1000mm x 1000mm x 1816mm	
Gross weight:	8	kg
Net weight:	8	kg

HO-A03 Display device for HO-M



Construction

Casing material:	metal
Dimensions (W×D×H):	170mm x 85mm x 31mm
Dimensions housing (W×D×H):	170mm x 85mm x 31mm
Overall dimensions mounted (W×D×H):	170mm x 85mm x 31mm

Power supply

Charging time:	8	h
Input voltage:	100 - 240 V	
Mains adapter/adaptor included:	EURO	
Operating time (Backlight off):	6	h

Functions

All measurement directions possible (360°):	nein
Automatic recognition of the impact sensor:	nein
Function to set limits:	nein
Statistical function:	nein
Visual ready signal:	nein

Category

Brand:	Sauter
Category:	Hardness testers

Packaging & shipping

Delivery:	24	h
Dimensions packaging (W×D×H):	170mm x 85mm x 31mm	
Gross weight:	500	g
Net weight:	500	g
Shipping method:	Parcel service	

285-892 Strong clamp for spring balances KERN 283 (50–500 N)



Construction

Dimensions (W×D×H): 50mm x 20mm x 20mm

Overall dimensions mounted (W×D×H): 50mm x 20mm x 20mm

Category

Brand: Sauter | KERN

Category: Accessories

Packaging & shipping

Delivery: 24 h

Dimensions packaging (W×D×H): 230mm x 26mm x 17mm

Gross weight: 9 g

Net weight: 6 g

AC 02 Ball shaped head for pressure and fracture tests to 5 kN



- for pressure and fracture tests up to 5 kN (e.g. foam, glass)
- 2 pieces
- When placing individual orders for clamps, please note: Clamps may require adapters to enable them to be mounted. Please let us know which devices are to be used with the clamp. In this way we will be able to deliver the appropriate adapters with the clamp

Construction

Casing material: metal
Dimensions housing (W×D×H): 35mm x 10mm x 10mm
Overall dimensions mounted (W×D×H): 35mm x 10mm x 10mm

Category

Brand: Sauter
Category: Accessories

Packaging & shipping

Delivery:	24	h
Dimensions packaging (W×D×H):	150mm x 100mm x 10mm	
Gross weight:	50	g
Net weight:	40	g

AC 08 Pressure disc for compression tests to 5 kN



- Ø 49 mm
- Scope of delivery: 2 pieces
- When placing individual orders for clamps, please note: Clamps may require adapters to enable them to be mounted. Please let us know which devices are to be used with the clamp. In this way we will be able to deliver the appropriate adapters with the clamp

Construction

Casing material: metal

Category

Brand: Sauter

Category: Accessories

Packaging & shipping

Delivery: 24 h

Dimensions packaging (W×D×H): 150mm x 100mm x 25mm

Gross weight: 340 g

Net weight: 320 g

AC 42 Drum clamps for cable connector extraction tests to 5 kN



- opening max. 9 mm for test objects with \varnothing 1,5 mm - 8 mm
- Scope of delivery: 1 piece
- When placing individual orders for clamps, please note: Clamps may require adapters to enable them to be mounted. Please let us know which devices are to be used with the clamp. In this way we will be able to deliver the appropriate adapters with the clamp

Construction

Casing material:	metal
Dimensions housing (W×D×H):	80mm x 57mm x 43mm
Overall dimensions mounted (W×D×H):	80mm x 57mm x 43mm

Category

Brand:	Sauter
Category:	Accessories

Packaging & shipping

Delivery:	24	h
Dimensions packaging (W×D×H):	80mm x 57mm x 43mm	
Gross weight:	620	g
Net weight:	600	g

AC 43 Standard attachments



- for Force gauges SAUTER and to 500 N Scope of delivery: 6 items
- When placing individual orders for clamps, please note: Clamps may require adapters to enable them to be mounted. Please let us know which devices are to be used with the clamp. In this way we will be able to deliver the appropriate adapters with the clamp

Construction

Casing material: metal
Dimensions housing (W×D×H): 80mm x 20mm x 20mm
Overall dimensions mounted (W×D×H): 80mm x 20mm x 20mm

Category

Brand: Sauter
Category: Accessories

Packaging & shipping

Delivery:	24	h
Dimensions packaging (W×D×H):	150mm x 100mm x 10mm	
Gross weight:	60	g
Net weight:	50	g

AC 430 Standard attachments for SAUTER FK



- Suitable for force gauge KERN FK
- Thread: M8
- When placing individual orders for clamps, please note: Clamps may require adapters to enable them to be mounted. Please let us know which devices are to be used with the clamp. In this way we will be able to deliver the appropriate adapters with the clamp

Construction

Casing material: metal
Dimensions (W×D×H): 80mm x 20mm x 20mm
Overall dimensions mounted (W×D×H): 80mm x 20mm x 20mm

Category

Brand: Sauter
Category: Accessories

Packaging & shipping

Delivery:	24	h
Dimensions packaging (W×D×H):	150mm x 100mm x 10mm	
Gross weight:	60	g
Net weight:	50	g

AFH 03 Handle (length: 300 mm) and two round force receptor plates (Ø 85 mm)



- for the safe testing of clamping forces[/]for Force gauges SAUTER FH 1K., FH 2K. and FH 5K.[list1]not approved to DIN 18650 or similar

Construction

Casing material: metal
Dimensions housing (W×D×H): 300mm x 85mm x 85mm
Overall dimensions mounted (W×D×H): 300mm x 85mm x 85mm

Category

Brand: Sauter
Category: Accessories

Packaging & shipping

Delivery: 24 h
Dimensions packaging (W×D×H): 300mm x 100mm x 100mm
Gross weight: 1 kg
Net weight: 1 kg

AFH 04 Stainless steel handle bar with rubber grip for safe handling



- Scope of delivery: 1 piece Suitable for Force gauges SAUTER FA, SAUTER FH-S and SAUTER FL

Construction

Casing material: metal
Dimensions housing (W×D×H): 290mm x 200mm x 31mm
Overall dimensions mounted (W×D×H): 290mm x 200mm x 31mm

Category

Brand: Sauter
Category: Accessories

Packaging & shipping

Delivery:	24	h
Dimensions packaging (W×D×H):	290mm x 200mm x 31mm	
Gross weight:	1	kg
Net weight:	1	kg

AFH 05 Stainless steel handle bar with rubber grip for safe handling



- Suitable for force gauge SAUTER FH-M (only KERN FH 1K.–KERN FH 20K.)

Construction

Casing material: metal

Overall dimensions mounted (W×D×H): 258mm x 20mm x 20mm

Category

Brand: Sauter

Category: Accessories

Packaging & shipping

Delivery: 24 h

Dimensions packaging (W×D×H): 258mm x 20mm x 20mm

Gross weight: 450 g

Net weight: 440 g

AFH 06 Pressure disc, Ø 110 mm, 1 piece



- Ø 110 mm
- Scope of delivery: 1 piece
- Material: aluminium
- For compression tests to 5 kN
- 10 mm thick
- Outer thread: M12

Construction

Dimensions housing (W×D×H): 110mm x 110mm x 20mm

Overall dimensions mounted (W×D×H): 110mm x 110mm x 20mm

Category

Brand: Sauter

Category: Accessories

Packaging & shipping

Delivery: 24 h

Dimensions packaging (W×D×H): 110mm x 110mm x 20mm

Gross weight: 580 g

Net weight: 560 g

AFH 12 RS-232/USB adapter



- to connect peripheral devices with USB connection, fits on all balances and instruments with RS 232 output
- Scope of delivery: adapter, CD with driver

Construction

Casing material: Plastic

Material: Plastic

Category

Brand: Sauter

Category: Accessories

Packaging & shipping

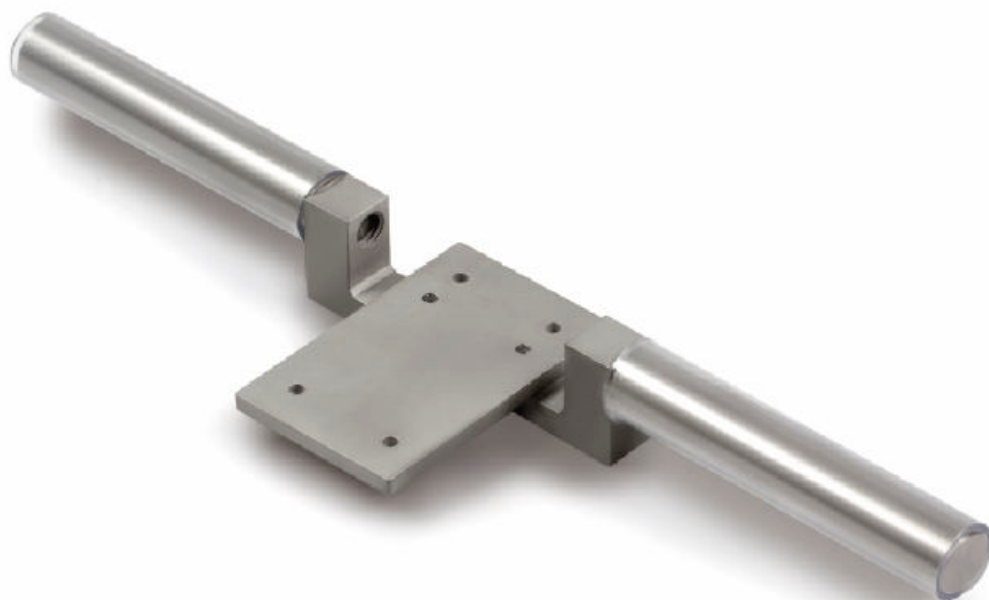
Delivery: 24 h

Dimensions packaging (W×D×H): 150mm x 105mm x 60mm

Gross weight: 100 g

Net weight: 80 g

AFK 02 Stainless steel handle bar with rubber grip for safe handling



- Scope of delivery: 1 piece
- Suitable for KERN FK

Construction

Casing material: metal
Dimensions housing (W×D×H): 290mm x 200mm x 31mm
Overall dimensions mounted (W×D×H): 290mm x 200mm x 31mm

Category

Brand: Sauter
Category: Accessories

Packaging & shipping

Delivery:	24	h
Dimensions packaging (W×D×H):	290mm x 200mm x 31mm	
Gross weight:	690	g
Net weight:	680	g

AHMO D02 Test block Type D/DC, hardness range 790 ± 40 HL



accuracy ≥ 4 HL[°]

- Ø 90 mm (1 mm)
- Net weight approx. 2,5 kg

Construction

Dimensions housing (W×D×H): 90mm x 90mm x 52mm

Overall dimensions mounted (W×D×H): 90mm x 90mm x 52mm

Services (optional)

Factory calibration certificate: 961

Category

Brand: Sauter

Category: Accessories

Packaging & shipping

Delivery: 24 h

Dimensions packaging (W×D×H): 90mm x 90mm x 54mm

Gross weight: 2 kg

Net weight: 2 kg

AHMO D03 Test block Type D/DC, hardness range 630 ± 40 HL



- accuracy ≥ 4 HL[°]
- Ø 90 mm (1 mm)
 - Net weight approx. 2,7 kg

Construction

Dimensions housing (W×D×H): 90mm x 90mm x 52mm
Overall dimensions mounted (W×D×H): 90mm x 90mm x 52mm

Services (optional)

Factory calibration certificate: 961

Category

Brand: Sauter
Category: Accessories

Packaging & shipping

Delivery:	24	h
Dimensions packaging (W×D×H):	90mm x 90mm x 52mm	
Gross weight:	2	kg
Net weight:	2	kg

AHMO D04 Test block Type D/DC, hardness range 530 ± 40 HL



- accuracy ≥ 4 HL
- \varnothing 90 mm (1 mm)
- Net weight approx. 2,7 kg

Construction

Dimensions housing (W×D×H): 90mm x 90mm x 52mm
Overall dimensions mounted (W×D×H): 90mm x 90mm x 52mm

Services (optional)

Factory calibration certificate: 961

Category

Brand: Sauter
Category: Accessories

Packaging & shipping

Delivery:	24	h
Dimensions packaging (W×D×H):	90mm x 90mm x 52mm	
Gross weight:	2	kg
Net weight:	2	kg

AHMR 01 Attachment rings for secure positioning



Construction

Dimensions housing (W×D×H): 174mm x 128mm x 31mm

Overall dimensions mounted (W×D×H): 174mm x 128mm x 31mm

Category

Brand: Sauter

Category: Accessories

Packaging & shipping

Delivery: 24 h

Dimensions packaging (W×D×H): 175mm x 130mm x 30mm

Gross weight: 410 g

Net weight: 53 g

ASU-01 Adjustment device for regular adjustment of the sound level meter



Category

Brand: Sauter
Category: Accessories

Packaging & shipping

Delivery:	24	h
Dimensions packaging (W×D×H):	185mm x 80mm x 55mm	
Gross weight:	350	g
Net weight:	270	g

ATB-US01 External sensor, 5 MHz, Ø 6 mm



- for thin test materials: measuring capacity (steel) 1–50 mm

Category

Brand: Sauter

Category: Accessories

Packaging & shipping

Delivery: 24 h

Gross weight: 60 g

Net weight: 50 g

ATB-US02 External sensor, 5 MHz, Ø 12 mm



- for hot test materials: measuring capacity (steel)
 - 1–225 mm at normal temperatures
 - [list2]- 4–100 mm at temperatures of up to 300 °C

Category

Brand: Sauter
Category: Accessories

Packaging & shipping

Delivery:	24	h
Dimensions packaging (W×D×H):	150mm x 100mm x 2mm	
Gross weight:	104	g
Net weight:	101	g

ATB-US03 Ultrasound contact gel



- Ultrasound contact gel, approx. 60 ml ()

Category

Brand: Sauter
Category: Accessories

Packaging & shipping

Delivery:	24	h
Dimensions packaging (W×D×H):	150mm x 100mm x 2mm	
Gross weight:	80	g
Net weight:	16	g

ATB-US07 Calibration foils for increased measuring accuracy for Digital coating thickness gauge SAUTER TB



- covers the range from 20 up to 2000 μm , with < 3 % tolerance

Construction

Material: Plastic

Category

Brand: Sauter

Category: Accessories

Packaging & shipping

Delivery: 24 h

Dimensions packaging (W×D×H): 55mm x 35mm x 8mm

Gross weight: 19 g

Net weight: 8 g

ATE 01 Sensor, Type F (for TE 1250-0.1F. and TE 1250-0.1FN.)



Construction

Material: Plastic

Category

Brand: Sauter

Category: Accessories

Packaging & shipping

Delivery: 24 h

Dimensions packaging (W×D×H): 100mm x 80mm x 2mm

Gross weight: 44 g

Net weight: 42 g

ATE 02 Sensor, Type N (for coating thickness gauges TB and TE)



- Suitable for coating thickness gauges TB 1000-0.1N., TB 1000-0.1FN., TE 1250-0.1N. and TE 1250-0.1FN.

Construction

Material: Plastic

Category

Brand: Sauter

Category: Accessories

Packaging & shipping

Delivery: 24 h

Dimensions packaging (W×D×H): 100mm x 80mm x 2mm

Gross weight: 47 g

Net weight: 45 g

ATG 01 Sensor, Type FN



Construction

Material: Plastic

Category

Brand: Sauter

Category: Accessories

Packaging & shipping

Delivery: 24 h

Dimensions packaging (W×D×H): 100mm x 80mm x 2mm

Gross weight: 48 g

Net weight: 46 g

ATU-US01 External sensor, 2,5 MHz, Ø 14 mm



- for thick samples, in particular cast iron with rough upper surfaces: measuring capacity (steel) 3–300 mm

Construction

Overall dimensions mounted (W×D×H): 57mm x 35mm x 35mm

Category

Brand: Sauter
Category: Accessories

Packaging & shipping

Delivery:	24	h
Dimensions packaging (W×D×H):	150mm x 100mm x 20mm	
Gross weight:	56	g
Net weight:	55	g

ATU-US02 External sensor, 7 MHz, Ø 6 mm, for thin test materials



- for thin test materials: measuring capacity (steel) 0,75–80 mm

Construction

Overall dimensions mounted (W×D×H): 57mm x 35mm x 35mm

Category

Brand: Sauter
Category: Accessories

Packaging & shipping

Delivery:	24	h
Dimensions packaging (W×D×H):	150mm x 210mm x 10mm	
Gross weight:	40	g
Net weight:	39	g

ATU-US09 External sensor, 5 MHz, Ø 10 mm



Construction

Overall dimensions mounted (W×D×H): 57mm x 35mm x 35mm

Category

Brand: Sauter
Category: Accessories

Packaging & shipping

Delivery:	24	h
Dimensions packaging (W×D×H):	150mm x 210mm x 10mm	
Gross weight:	50	g
Net weight:	50	g

ATU-US10 External sensor, 5 MHz, Ø 10 mm, transducer at an angle of 90°



Construction

Overall dimensions mounted (W×D×H): 57mm x 35mm x 35mm

Category

Brand: Sauter
Category: Accessories

Packaging & shipping

Delivery:	24	h
Dimensions packaging (W×D×H):	150mm x 210mm x 10mm	
Gross weight:	42	g
Net weight:	41	g

ATU-US12 External sensor for echo-echo measuring

- 5 MHz, Ø 10 mm
- Suitable for Ultrasonic thickness gauge SAUTER TN-EE

Construction

Overall dimensions mounted (W×D×H): 10mm x 10mm x 25mm

Category

Brand: Sauter
Category: Accessories

Packaging & shipping

Delivery:	24	h
Dimensions packaging (W×D×H):	70mm x 100mm x 2mm	
Gross weight:	70	g
Net weight:	68	g

BFB-A03 Cable with special length



- Cable with special length 15 m
- between display device and platform
- must be ordered at purchase
- Suitable for Floor scales KERN UFN, KERN UFB, KERN UFA, KERN NFB, KERN BFB, KERN BFN

Construction

Cable length: 15 m
Dimensions (W×D×H): 15000mm x 12mm x 12mm
Material weighing plate: Steel, lacquered

Category


Brand: KERN
Category: Accessories

Packaging & shipping

Delivery: 24 h
Dimensions packaging (W×D×H): 500mm x 120mm x 120mm
Gross weight: 4 kg
Net weight: 3 kg

BFN-A03 Pair of base plates for KERN BFN



- Pair of base plates to fix the weighing bridge to the floor
- Suitable for floor scale KERN BFN
-  must be ordered at purchase
- Note: For verified scales the weighing bridge must be fixed to the floor. Optionally, with an access ramp, a footplate pair or a pit frame

Category

Brand: KERN
Category: Accessories
Product Group: Pair of base plates

Packaging & shipping

Delivery:	24	h
Dimensions packaging (W×D×H):	210mm x 105mm x 20mm	
Gross weight:	800	g
Net weight:	700	g

CE P2012 Foot for CT-P1/CT-P2 (≤ 2000 kg)



- Material: Nickel-plated steel
- Only suitable for models with nominal load ≤ 2000 kg

Category

Brand: Sauter
Category: Accessories

Packaging & shipping

Delivery:	24	h
Dimensions packaging (W×D×H):	65mm x 65mm x 100mm	
Gross weight:	367	g
Net weight:	348	g

CE Q12 Zugvorrichtung für „S“-Messzelle M12×1,75, Grenzlast 2850 kg



- Material:

Category

Brand: Sauter
Category: Accessories

Packaging & shipping

Delivery:	24	h
Gross weight:	1	kg
Net weight:	1	kg

CE Q34901 Foot for CB-Q2



- Material:

Category

Brand: Sauter
Category: Accessories

Packaging & shipping

Delivery:	24	h
Dimensions packaging (W×D×H):	1mm x 1mm x 1mm	
Gross weight:	2	g
Net weight:	3	kg

CE RQ12 Foot M12×1,75, for CT-Q1



- Material:
- only suitable for models with nominal load ≤ 2000 kg

Category

Brand: Sauter

Category: Accessories

Packaging & shipping

Delivery: 24 h

Gross weight: 1 kg

Net weight: 995 g

CE RQ35902 Lastecke mit Abhebesicherung for CT-Q1 (≤ 2000 kg)

- Material: stainless steel
- Only suitable for models with nominal load ≤ 2000 kg

Category

Brand: Sauter
Category: Accessories

Packaging & shipping

Delivery: 24 h
Dimensions packaging (W×D×H): 330mm x 230mm x 160mm
Net weight: 5 kg

CE RQ35903 Lastecke mit Abhebesicherung for CT-Q1 (3000–5000 kg)

- Material: stainless steel
- Only suitable for models with nominal load 3000–5000 kg

Category

Brand: Sauter
Category: Accessories

Packaging & shipping

Delivery:	24	h
Dimensions packaging (W×D×H):	1mm x 1mm x 1mm	
Gross weight:	2	g
Net weight:	8	kg

CE RQ35909 Elastomerlager mit Abhebesicherung for CT-Q1 (≤ 2000 kg)

- Material: stainless steel
- Only suitable for models with nominal load ≤ 2000 kg

Category

Brand: Sauter

Category: Accessories

Packaging & shipping

Delivery: 24 h

Gross weight: 2 kg

Net weight: 2 kg

CE RQ35910 Elastomerlager mit Abhebesicherung for CT-Q1 (3000–500 kg)

- Material: stainless steel
- Only suitable for models with nominal load 3000–5000 kg

Category

Brand: Sauter

Category: Accessories

Packaging & shipping

Delivery: 24 h

Gross weight: 3 kg

Net weight: 3 kg

CE RQ35912 Base plate for CT-Q1 (3000–5000 kg)

- Material: stainless steel
- Only suitable for models with nominal load 3000–5000 kg

Category

Brand: Sauter
Category: Accessories

Packaging & shipping

Delivery:	24	h
Dimensions packaging (W×D×H):	1mm x 1mm x 1mm	
Gross weight:	2	g
Net weight:	5	kg

CE RQ35913 Foot for CT-Q1 (≤ 2000 kg)

- Material: stainless steel
- Only suitable for models with nominal load ≤ 2000 kg

Category

Brand: Sauter

Category: Accessories

Packaging & shipping

Delivery: 24 h

Gross weight: 1 kg

Net weight: 1 kg

CE RQ35917 Foot for CT-Q1 (3000–5000 kg)

- Material: stainless steel
- Only suitable for models with nominal load 3000–5000 kg

Category

Brand: Sauter
Category: Accessories

Packaging & shipping

Delivery: 24 h
Dimensions packaging (W×D×H): 1mm x 1mm x 1mm
Gross weight: 2 g
Net weight: 2 kg

CE RQ35918 Elastomerlager mit Abhebesicherung for CT Q1 (7500–10000 kg)

- Material: stainless steel
- Only suitable for models with nominal load 7500–10000 kg

Category

Brand: Sauter

Category: Accessories

Packaging & shipping

Delivery: 24 h

Gross weight: 7 kg

Net weight: 7 kg

CH-A01N Tare pan made from stainless steel



- made from stainless steel. Ideal for weighing loose small parts, fruit, vegetables etc. Max. working load 30 kg. Removable tare pan which makes cleaning easy and hygienic. Suitable for models KERN CH 15K20, HCB 20K10, HCN 20K50IP, HDB-N, HDB-XL

Construction

Dimensions (W×D×H): 290mm x 240mm x 340mm

Material: stainless steel

Overall dimensions mounted (W×D×H): 290mm x 240mm x 340mm

Category

Brand: KERN

Category: Accessories

Product Group: Tare pan

Packaging & shipping

Delivery: 24 h

Dimensions packaging (W×D×H): 330mm x 300mm x 70mm

Gross weight: 700 g

Net weight: 470 g

FH-A01 PC connection cable (RS-232) for force gauge SAUTER FH



Construction

Dimensions housing (W×D×H): 1500mm x 20mm x 30mm

Overall dimensions mounted (W×D×H): 1500mm x 20mm x 30mm

Category

Brand: Sauter

Category: Accessories

Packaging & shipping

Delivery: 24 h

Dimensions packaging (W×D×H): 180mm x 140mm x 10mm

Gross weight: 150 g

Net weight: 140 g

FK-A01 Tensiometer attachment (to 250 N)



- Tensiometer attachment with Safe-insert function: Pull and release to insert the running cable in between the rolls
- Suitable for force gauge KERN FK (models SAUTER FK 10. to SAUTER FK 250.)
- Force-measuring device is not included with the delivery

Construction

Casing material:	metal
Dimensions device (W×D×H):	140mm x 140mm x 40mm
Dimensions housing (W×D×H):	140mm x 140mm x 40mm
Dimensions of display device (W×D×H):	140mm x 140mm x 40mm
Overall dimensions mounted (W×D×H):	140mm x 140mm x 40mm

Category

Brand:	Sauter
Category:	Accessories

Packaging & shipping

Delivery:	24	h
Dimensions packaging (W×D×H):	200mm x 100mm x 50mm	
Gross weight:	520	g
Net weight:	500	g

FK-A02 Tensiometer attachment (to 1000 N)



- Tensiometer kit for high-capacity tensile strength testing up to 1000 N Suitable for force gauge KERN FK (up to 1000 N)
- Force-measuring device is not included with the delivery

Construction

Casing material:	metal
Dimensions device (W×D×H):	140mm x 140mm x 40mm
Dimensions housing (W×D×H):	120mm x 80mm x 28mm
Dimensions of display device (W×D×H):	120mm x 80mm x 28mm
Overall dimensions mounted (W×D×H):	152mm x 80mm x 28mm

Category

Brand:	Sauter
Category:	Accessories

Packaging & shipping

Delivery:	24	h
Gross weight:	133	g
Net weight:	130	g

HO-A01 UCI-Sonde for HV 1



- Suitable for hardness tester SAUTER HO

Construction

Casing material: metal
Dimensions housing (W×D×H): 155mm x 22mm x 22mm
Overall dimensions mounted (W×D×H): 155mm x 22mm x 22mm

Category

Brand: Sauter
Category: Accessories

Packaging & shipping

Delivery:	24	h
Dimensions packaging (W×D×H):	150mm x 40mm x 40mm	
Gross weight:	225	g
Net weight:	215	g

HO-A02 UCI-Sonde for HV 2



- Suitable for hardness tester SAUTER HO

Construction

Casing material: metal
Dimensions housing (W×D×H): 155mm x 22mm x 22mm
Overall dimensions mounted (W×D×H): 155mm x 22mm x 22mm

Category

Brand: Sauter
Category: Accessories

Packaging & shipping

Delivery:	24	h
Dimensions packaging (W×D×H):	150mm x 40mm x 40mm	
Gross weight:	225	g
Net weight:	215	g

HO-A04 Supporting ring, flat



Construction

Casing material: metal
Dimensions housing (W×D×H): 36mm x 36mm x 28mm
Overall dimensions mounted (W×D×H): 36mm x 36mm x 28mm

Category

Brand: Sauter
Category: Accessories

Packaging & shipping

Delivery:	24	h
Dimensions packaging (W×D×H):	40mm x 40mm x 40mm	
Gross weight:	55	g
Net weight:	53	g

HO-A05 Supporting ring, small cylinder (incl. Deep-hole protective cover KERN HO-A07)



- Included in the scope of supply: Deep-hole protective cover KERN HO-A07

Construction

Casing material:	metal
Dimensions housing (W×D×H):	36mm x 36mm x 28mm
Overall dimensions mounted (W×D×H):	36mm x 36mm x 28mm

Category

Brand:	Sauter
Category:	Accessories

Packaging & shipping

Delivery:	24	h
Dimensions packaging (W×D×H):	40mm x 40mm x 40mm	
Gross weight:	50	g
Net weight:	49	g

HO-A06 Supporting ring, large cylinder (incl. Deep-hole protective cover KERN HO-A07)



- Included in the scope of supply: Deep-hole protective cover KERN HO-A07

Construction

Casing material:	metal
Dimensions housing (W×D×H):	36mm x 36mm x 28mm
Overall dimensions mounted (W×D×H):	36mm x 36mm x 28mm

Category

Brand:	Sauter
Category:	Accessories

Packaging & shipping

Delivery:	24	h
Dimensions packaging (W×D×H):	40mm x 40mm x 40mm	
Gross weight:	50	g
Net weight:	49	g

HO-A07 Deep-hole protective cover



Construction

Casing material: metal
Dimensions housing (W×D×H): 36mm x 36mm x 28mm
Overall dimensions mounted (W×D×H): 36mm x 36mm x 28mm

Category

Brand: Sauter
Category: Accessories

Packaging & shipping

Delivery:	24	h
Dimensions packaging (W×D×H):	40mm x 40mm x 40mm	
Gross weight:	50	g
Net weight:	49	g

HO-A08 Test bench for repeatable movements during testing



- Stroke length 34 mm
- Maximum height of the test object 240 mm

Construction

Casing material: metal
Dimensions housing (W×D×H): 200mm x 200mm x 332mm
Overall dimensions mounted (W×D×H): 200mm x 200mm x 332mm

Category

Brand: Sauter
Category: Accessories

Packaging & shipping

Delivery:	24	h
Dimensions packaging (W×D×H):	320mm x 320mm x 440mm	
Gross weight:	9	kg
Net weight:	8	kg

HO-A09 Calibration and adjustment plate (hardness test blocks) for SAUTER HO, 28–35 HRC



- Calibration and adjustment plate (hardness test blocks) with defined and tested steel hardness for regular testing and adjustment of hardness testing devices
- A key feature of the plates is the low-granular, homogenous finish of the steel
- 28–35 HRC
- Suitable for hardness tester SAUTER HO

Construction

Casing material:	stainless steel
Dimensions housing (W×D×H):	88mm x 88mm x 16mm
Material:	stainless steel
Overall dimensions mounted (W×D×H):	88mm x 88mm x 16mm

Category

Brand:	Sauter
Category:	Accessories

Packaging & shipping

Delivery:	24	h
Dimensions packaging (W×D×H):	109mm x 108mm x 33mm	
Gross weight:	860	g
Net weight:	850	g

HO-A10 Calibration and adjustment plate (hardness test blocks) for SAUTER HO, 38–43 HRC



- Calibration and adjustment plate (hardness test blocks) with defined and tested steel hardness for regular testing and adjustment of hardness testing devices
- A key feature of the plates is the low-granular, homogenous finish of the steel
- 38–43 HRC
- Suitable for hardness tester SAUTER HO

Construction

Casing material:	stainless steel
Dimensions housing (W×D×H):	90mm x 90mm x 16mm
Material:	stainless steel
Overall dimensions mounted (W×D×H):	90mm x 90mm x 16mm

Category

Brand:	Sauter
Category:	Accessories

Packaging & shipping

Delivery:	24	h
Dimensions packaging (W×D×H):	150mm x 150mm x 20mm	
Gross weight:	860	g
Net weight:	850	g

HO-A11 Calibration and adjustment plate (hardness test blocks) for SAUTER HO, 48–53 HRC



- Calibration and adjustment plate (hardness test blocks) with defined and tested steel hardness for regular testing and adjustment of hardness testing devices
- A key feature of the plates is the low-granular, homogenous finish of the steel
- 48–53 HRC
- Suitable for hardness tester SAUTER HO

Construction

Casing material:	stainless steel
Dimensions housing (W×D×H):	90mm x 90mm x 16mm
Material:	stainless steel
Overall dimensions mounted (W×D×H):	90mm x 90mm x 16mm

Category

Brand:	Sauter
Category:	Accessories

Packaging & shipping

Delivery:	24	h
Dimensions packaging (W×D×H):	150mm x 150mm x 20mm	
Gross weight:	860	g
Net weight:	850	g

HO-A12 Calibration and adjustment plate (hardness test blocks) for SAUTER HO, 58–63 HRC



- Calibration and adjustment plate (hardness test blocks) with defined and tested steel hardness for regular testing and adjustment of hardness testing devices
- A key feature of the plates is the low-granular, homogenous finish of the steel
- 58–63 HRC
- Suitable for hardness tester SAUTER HO

Construction

Casing material:	stainless steel
Dimensions housing (W×D×H):	90mm x 90mm x 16mm
Overall dimensions mounted (W×D×H):	90mm x 90mm x 16mm

Category

Brand:	Sauter
Category:	Accessories

Packaging & shipping

Delivery:	24	h
Dimensions packaging (W×D×H):	150mm x 150mm x 20mm	
Gross weight:	860	g
Net weight:	850	g

HO-A19 Test bench for round, flat objects for use with these motorised probes: HO-A15 to -A18



- This test bench is ideal for hardness testing of round objects such as pipes or rods from Ø 80 mm
- Its lightweight aluminium construction means that you can keep using it without getting tired
- The precise adjustment of the position of the probe and the use of motorised probes mean that you can work very rapidly
- Net weight approx. 1,6 kg
- Overall dimensions W×D×H 205×142×284 mm

Construction

Casing material: aluminium
Dimensions housing (W×D×H): 205mm x 142mm x 284mm
Overall dimensions mounted (W×D×H): 205mm x 142mm x 284mm

Category

Brand: Sauter
Category: Accessories

Packaging & shipping

Delivery:	24	h
Dimensions packaging (W×D×H):	405mm x 340mm x 580mm	
Gross weight:	2	kg
Net weight:	1	kg

KFN-A01 Data interface RS-232 for KERN BFN, KERN SFB and KERN UFN



- Data interface RS-232 interface cable included
- Suitable for Floor scale KERN BFN, Stainless steel platform scale KERN SFB and Pallet scale KERN UFN

Construction

Cable length: 1 m

Category

Brand: KERN

Category: Accessories

Product Group: Data interface RS-232

Packaging & shipping

Delivery: 24 h

Dimensions packaging (W×D×H): 16mm x 53mm x 135mm

Gross weight: 154 g

Net weight: 122 g

KIB-A01 Alibi memory, including USB interface for exporting weighing results to external data storage media, such as, for example, USB sticks, hard drives, etc.

- Not in combination with verification

Construction

Dimensions (W×D×H): 10mm x 10mm x 10mm

Category

Brand: KERN

Category: Accessories

Environmental conditions

Maximum operating temperature: 60 °C

Minimum ambient temperature: -20.000000000000000 °C

Packaging & shipping

Delivery: 24 h

Dimensions packaging (W×D×H): 65mm x 60mm x 100mm

Gross weight: 100 g

Net weight: 100 g

KIB-A02 Ethernet interface

Construction

Dimensions (W×D×H): 10mm x 10mm x 10mm

Category

Brand: KERN

Category: Accessories

Product Group: Ethernet interface

Environmental conditions

Maximum operating temperature: 60 °C

Minimum ambient temperature: -20.000000000000000 °C

Packaging & shipping

Delivery: 24 h

Dimensions packaging (W×D×H): 175mm x 100mm x 55mm

Gross weight: 74 g

Net weight: 42 g

KIB-A03 USB interface

Construction

Dimensions (W×D×H): 10mm x 10mm x 10mm

Category

Brand: KERN

Category: Accessories

Environmental conditions

Maximum operating temperature: 60 °C

Minimum ambient temperature: -20.000000000000000 °C

Packaging & shipping

Delivery: 24 h

Dimensions packaging (W×D×H): 65mm x 60mm x 100mm

Gross weight: 380 g

Net weight: 380 g

KIB-A04 Bluetooth data interface

Construction

Dimensions (W×D×H): 10mm x 10mm x 10mm

Category

Brand: KERN

Category: Accessories

Environmental conditions

Maximum operating temperature: 60 °C

Minimum ambient temperature: -20.000000000000000 °C

Packaging & shipping

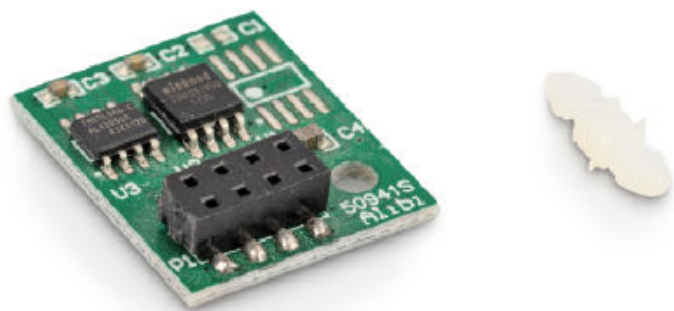
Delivery: 24 h

Dimensions packaging (W×D×H): 65mm x 60mm x 100mm

Gross weight: 100 g

Net weight: 100 g

KIB-A13 Alibi memory module for storing values relevant under calibration law



- Store up to 250,000 values

Construction

Dimensions (W×D×H): 10mm x 10mm x 10mm

Category

Brand: KERN

Category: Accessories

Environmental conditions

Maximum operating temperature: 60 °C

Minimum ambient temperature: -20.000000000000000 °C

Packaging & shipping

Delivery: 24 h

Dimensions packaging (W×D×H): 65mm x 60mm x 100mm

Gross weight: 100 g

Net weight: 100 g

KIB-M01 Conversion of the display device, to move the cable outlet to the front of the display device

- Ideal e.g. for subsequent wall mounting of the display device
- Standard configuration ex works: rear outlet
- Factory Option, must be ordered at purchase
- Delivery: additional 1 - 2 working days

Construction

Material: Plastic

Category

Brand: KERN

Category: Accessories

Environmental conditions

Maximum operating temperature: 60 °C

Minimum ambient temperature: -20.000000000000000 °C

Packaging & shipping

Delivery: 24 h

Gross weight: 100 g

Net weight: 100 g

KXS-A02 Bluetooth data interface (only for non-verified models)

- Suitable for display device KERN KXS-TM
- Only for non-verified models
- Not compatible with iOS

Construction

Dimensions (W×D×H): 10mm x 5mm x 60mm

Category

Brand: KERN

Category: Accessories

Packaging & shipping

Delivery: 24 h

Dimensions packaging (W×D×H): 100mm x 75mm x 40mm

Gross weight: 100 g

Net weight: 100 g

LB-A01 PC connection cable for Digital length measuring device SAUTER LB



Construction

Dimensions housing (W×D×H): 140mm x 140mm x 20mm

Overall dimensions mounted (W×D×H): 140mm x 140mm x 20mm

Category

Brand: Sauter

Category: Accessories

Packaging & shipping

Delivery: 24 h

Dimensions packaging (W×D×H): 150mm x 150mm x 20mm

Gross weight: 37 g

Net weight: 37 g

MCC-A01 Mains adapter pouch



Construction

Casing material: Plastic
Dimensions of display device (W×D×H): 200mm x 130mm x 60mm

Category

Brand: KERN
Category: Accessories

Packaging & shipping

Delivery:	24	h
Dimensions packaging (W×D×H):	350mm x 300mm x 35mm	
Gross weight:	150	g
Net weight:	150	g

PBS-A03 Set for density determination for PBS/PBJ (W×D 170×180 mm)

- Set for density determination of liquids and solids
- Suitable for Precision balance KERN PBS/PBJ (only for models with weighing plate size W×D 170×180 mm)

Category


Brand: KERN
Category: Accessories
Product Group: Set for density determination

Packaging & shipping

Delivery: 24 h
Dimensions packaging (W×D×H): 410mm x 320mm x 235mm
Gross weight: 2 kg
Net weight: 1 kg

PES-A02 Relay output for KERN PES/PEJ



- Relay output with 5 outputs for weighing in 3 tolerance ranges
- Suitable for Precision balance KERN PES/PEJ
-  must be ordered at purchase

Category

Brand: KERN
Category: Accessories
Product Group: Relay output

Packaging & shipping

Delivery:	24	h
Dimensions packaging (W×D×H):	210mm x 150mm x 25mm	
Gross weight:	132	g
Net weight:	62	g

PFB-A01 Hook for underfloor weighing



Construction

Dimensions (W×D×H): 10mm x 10mm x 3mm

Category

Brand: KERN

Category: Accessories

Packaging & shipping

Delivery: 24 h

Dimensions packaging (W×D×H): 180mm x 130mm x 15mm

Gross weight: 12 g

Net weight: 5 g

RFS-A02 Tare pan made from stainless steel



- ideal for weighing loose fruit and vegetables
- For easy and hygienic cleaning
- W×D×H 370×240×20 mm
- Net weight approx. 554 g

Construction

Dimensions (W×D×H): 400mm x 300mm x 45mm

Material: stainless steel

Category

Brand: KERN

Category: Accessories

Packaging & shipping

Delivery: 24 h

Dimensions packaging (W×D×H): 405mm x 305mm x 55mm

Gross weight: 683 g

Net weight: 554 g

RFS-A10 Thermal receipt rolls (10 pieces) for KERN and KERN



- width 56 mm, Ø 51 mm
- Suitable for price computing scale KERN and Pallet truck scale KERN

Construction

Dimensions (W×D×H): 57mm x 51mm x 18000mm

Category

Brand: KERN

Category: Accessories

Packaging & shipping

Delivery: 24 h

Dimensions packaging (W×D×H): 10mm x 10mm x 10mm

Gross weight: 1 kg

Net weight: 1 kg

ABP-A01 Draft shield rear panel with integrated ioniser to neutralise electrostatic charge



- Draft shield rear panel with integrated ioniser to neutralise electrostatic charge. Is fitted in place of the existing glass rear panel of the draft shield. Suitable for all models in the KERN ABP range, please order at the time you order your balance, the scope of delivery is the rear panel, ioniser, power supply. Factory Option

Construction

Dimensions (W×D×H): 124mm x 87mm x 49mm
Material: Plastic

Category

Brand: KERN
Category: Accessories
Product Group: Ioniser

Packaging & shipping

Delivery:	24	h
Dimensions packaging (W×D×H):	325mm x 263mm x 158mm	
Gross weight:	1	kg
Net weight:	850	g

YMI-A01 WLAN-Modul

Construction

Dimensions (W×D×H): 1500mm x 5mm x 60mm

Material: Plastic

Category

Brand: KERN

Category: Accessories

Packaging & shipping

Delivery: 24 h

Dimensions packaging (W×D×H): 25mm x 25mm x 25mm

Gross weight: 5 g

Net weight: 4 g

TVL-XL Extension kit for SAUTER TVL



- Extension kit for SAUTER TVL, extends the work zone by 340 mm, which means that even larger test items can be measured. The travel path (spindle height from the base plate) remains the same when doing this: 230 mm.
- Net weight approx. 2700 g

Construction

Casing material:	Metal, lacquered	
Dimensions housing (W×D×H):	35mm x 110mm x 344mm	
Direction of measurement:	horizontal	
Maximum generated force:	500	N
Maximum test object length:	45	cm
Maximum travelling distance:	23	cm
Overall dimensions mounted (W×D×H): 35mm x 110mm x 344mm		

Category

Brand:	Sauter
Category:	Accessories

Packaging & shipping

Delivery:	24	h
Dimensions packaging (W×D×H):	360mm x 235mm x 165mm	
Gross weight:	2	kg
Net weight:	2	kg

YPS-04 Antivibration plate



- KERN antivibration plates KERN YPS-04, -05, -06 have been constructed to absorb vibrations and oscillations, which would otherwise distort the weighing result from highly-precision analytical and precision balances. Also ideal for vibration-free positioning of microscopes
- The antivibration plate is made from polished granite and is positioned on absorbing rubber components
- You can work in an ergonomic way at the antivibration plate whether you are in a standing or seated position
- Compact size, practical for small spaces
- All surfaces are easy and hygienic to clean
- Suitable for all KERN analytical balances, precision balances and microscopes with appropriate dimensions
- Dimensions 400×450×60 mm

Construction

Dimensions (W×D×H): 400mm x 450mm x 60mm

Category

Brand: Accessories

Category: Accessories

Packaging & shipping

Delivery: 48 h

Dimensions packaging (W×D×H): 800mm x 600mm x 470mm

Gross weight: 37 kg

Net weight: 29 kg

YPS-05 Antivibration plate



- KERN antivibration plates KERN YPS-04, -05, -06 have been constructed to absorb vibrations and oscillations, which would otherwise distort the weighing result from highly-precision analytical and precision balances. Also ideal for vibration-free positioning of microscopes
- The antivibration plate is made from polished granite and is positioned on absorbing rubber components
- You can work in an ergonomic way at the antivibration plate whether you are in a standing or seated position
- Compact size, practical for small spaces
- All surfaces are easy and hygienic to clean
- Suitable for all KERN analytical balances, precision balances and microscopes with appropriate dimensions
- Dimensions 565×450×60 mm

Construction

Dimensions (W×D×H): 565mm x 450mm x 60mm

Category

Brand: Accessories

Category: Accessories

Packaging & shipping

Delivery: 48 h

Dimensions packaging (W×D×H): 800mm x 600mm x 400mm

Gross weight: 50 kg

Net weight: 41 kg

YSC-04 High-strength shackle, 2 pieces

<ul style="list-style-type: none">• High-strength shackle, hot-dipped galvanised cast steel bracket, curved edge• Scope of delivery: 2 shackles, 2lacquered screw bolts• Only suitable for models with [Max] > 0,5 t		
Construction		
Dimensions (W×D×H):	28mm x 60mm x 73mm	
Category		
Brand:	KERN	
Category:	Accessories	
Packaging & shipping		
Delivery:	24	h
Dimensions packaging (W×D×H):	130mm x 120mm x 47mm	
Gross weight:	470	g
Net weight:	385	g

YSC-01 High-strength shackle, suitable for models with [Max] ≤ 5 t



- High-strength shackle, cast steel, hot-dip galvanised and lacquered, with screw bolts
- Suitable for crane scales KERN HFA and KERN HFC (only for models with [Max] ≤ 3 t)

Construction

Dimensions (W×D×H): 22mm x 25mm x 54mm

Category

Brand: KERN

Category: Accessories

Packaging & shipping

Delivery: 24 h

Dimensions packaging (W×D×H): 100mm x 200mm x 50mm

Gross weight: 2 kg

Net weight: 1 kg

YSC-02 High-strength shackle, suitable for models with [Max] ≥ 5 t



- High-strength shackle, cast steel, hot-dip galvanised and lacquered, with screw bolts
- Suitable for crane scales KERN HFA and KERN HFC (only for models with [Max] ≥ 5 t)

Construction

Dimensions (W×D×H): 32mm x 35mm x 76mm

Category

Brand: KERN

Category: Accessories

Packaging & shipping

Delivery: 24 h

Dimensions packaging (W×D×H): 100mm x 200mm x 50mm

Gross weight: 9 kg

Net weight: 4 kg

По вопросам продаж и поддержки обращайтесь:

Алматы (7273)495-231	Калининград (4012)72-03-81	Омск (3812)21-46-40	Сыктывкар (8212)25-95-17
Ангарск (3955)60-70-56	Калуга (4842)92-23-67	Орел (4862)44-53-42	Тамбов (4752)50-40-97
Архангельск (8182)63-90-72	Кемерово (3842)65-04-62	Оренбург (3532)37-68-04	Тверь (4822)63-31-35
Астрахань (8512)99-46-04	Киров (8332)68-02-04	Пенза (8412)22-31-16	Тольятти (8482)63-91-07
Барнаул (3852)73-04-60	Коломна (4966)23-41-49	Петрозаводск (8142)55-98-37	Томск (3822)98-41-53
Белгород (4722)40-23-64	Кострома (4942)77-07-48	Псков (8112)59-10-37	Тула (4872)33-79-87
Благовещенск (4162)22-76-07	Краснодар (861)203-40-90	Пермь (342)205-81-47	Тюмень (3452)66-21-18
Брянск (4832)59-03-52	Красноярск (391)204-63-61	Ростов-на-Дону (863)308-18-15	Ульяновск (8422)24-23-59
Владивосток (423)249-28-31	Курск (4712)77-13-04	Рязань (4912)46-61-64	Улан-Удэ (3012)59-97-51
Владикавказ (8672)28-90-48	Курган (3522)50-90-47	Самара (846)206-03-16	Уфа (347)229-48-12
Владимир (4922)49-43-18	Липецк (4742)52-20-81	Саранск (8342)22-96-24	Хабаровск (4212)92-98-04
Волгоград (844)278-03-48	Магнитогорск (3519)55-03-13	Санкт-Петербург (812)309-46-40	Чебоксары (8352)28-53-07
Вологда (8172)26-41-59	Москва (495)268-04-70	Саратов (845)249-38-78	Челябинск (351)202-03-61
Воронеж (473)204-51-73	Мурманск (8152)59-64-93	Севастополь (8692)22-31-93	Череповец (8202)49-02-64
Екатеринбург (343)384-55-89	Набережные Челны (8552)20-53-41	Симферополь (3652)67-13-56	Чита (3022)38-34-83
Иваново (4932)77-34-06	Нижний Новгород (831)429-08-12	Смоленск (4812)29-41-54	Якутск (4112)23-90-97
Ижевск (3412)26-03-58	Новокузнецк (3843)20-46-81	Сочи (862)225-72-31	Ярославль (4852)69-52-93
Иркутск (395)279-98-46	Ноябрьск (3496)41-32-12	Ставрополь (8652)20-65-13	
Казань (843)206-01-48	Новосибирск (383)227-86-73	Сургут (3462)77-98-35	
Россия +7(495)268-04-70	Киргизия +996(312)-96-26-47	Казахстан +7(7172)727-132	