

CE, VHP, YKV, KF, KXP, CP, CD, CB, CT, CK, CJ, CS, CO, CK, CR, DC

Технические характеристики

По вопросам продаж и поддержки обращайтесь:

Алматы (7273)495-231
Ангарск (3955)60-70-56
Архангельск (8182)63-90-72
Астрахань (8512)99-46-04
Барнаул (3852)73-04-60
Белгород (4722)40-23-64
Благовещенск (4162)22-76-07
Брянск (4832)59-03-52
Владивосток (423)249-28-31
Владикавказ (8672)28-90-48
Владимир (4922)49-43-18
Волгоград (844)278-03-48
Вологда (8172)26-41-59
Воронеж (473)204-51-73
Екатеринбург (343)384-55-89
Иваново (4932)77-34-06
Ижевск (3412)26-03-58
Иркутск (395)279-98-46
Казань (843)206-01-48

Россия +7(495)268-04-70

Калининград (4012)72-03-81
Калуга (4842)92-23-67
Кемерово (3842)65-04-62
Киров (8332)68-02-04
Коломна (4966)23-41-49
Кострома (4942)77-07-48
Краснодар (861)203-40-90
Красноярск (391)204-63-61
Курск (4712)77-13-04
Курган (3522)50-90-47
Липецк (4742)52-20-81
Магнитогорск (3519)55-03-13
Москва (495)268-04-70
Мурманск (8152)59-64-93
Набережные Челны (8552)20-53-41
Нижний Новгород (831)429-08-12
Новокузнецк (3843)20-46-81
Ноябрьск (3496)41-32-12
Новосибирск (383)227-86-73

Киргизия +996(312)-96-26-47

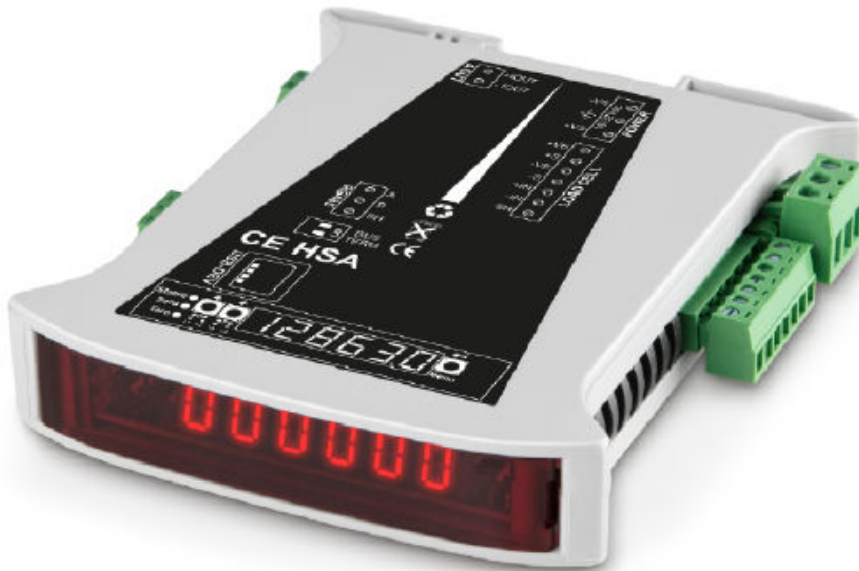
Омск (3812)21-46-40
Орел (4862)44-53-42
Оренбург (3532)37-68-04
Пенза (8412)22-31-16
Петрозаводск (8142)55-98-37
Псков (8112)59-10-37
Пермь (342)205-81-47
Ростов-на-Дону (863)308-18-15
Рязань (4912)46-61-64
Самара (846)206-03-16
Саранск (8342)22-96-24
Санкт-Петербург (812)309-46-40
Саратов (845)249-38-78
Севастополь (8692)22-31-93
Симферополь (3652)67-13-56
Смоленск (4812)29-41-54
Сочи (862)225-72-31
Ставрополь (8652)20-65-13
Сургут (3462)77-98-35

Казахстан +7(7172)727-132

Сыктывкар (8212)25-95-17
Тамбов (4752)50-40-97
Тверь (4822)63-31-35
Тольятти (8482)63-91-07
Томск (3822)98-41-53
Тула (4872)33-79-87
Тюмень (3452)66-21-18
Ульяновск (8422)24-23-59
Улан-Удэ (3012)59-97-51
Уфа (347)229-48-12
Хабаровск (4212)92-98-04
Чебоксары (8352)28-53-07
Челябинск (351)202-03-61
Череповец (8202)49-02-64
Чита (3022)38-34-83
Якутск (4112)23-90-97
Ярославль (4852)69-52-93

CE Hx

Super compact display device (rail-mounted module) for installation in switch cabinets



- Compact display unit for recording weighing data using strain gauge load cells, e.g. in industrial applications
- With its small size it can be installed in switch cabinets without taking up much space
- Thanks to the many interface variants, the modules can be integrated easily into existing infrastructures and systems
- The modules can either be used individually or as a Buslink system with a total of up to 332 DIN rail modules
- The module can be configured easily using a PC connected to the system with the software we deliver with the product
- Bright LED display for visual monitoring and for adjusting settings
- Time-saving G-Cal TM technology (geographical calibration) for rapid, accurate calibration without using weights, convenient for use across the world via a network or the internet
- Convenient communication using remote devices
- Backup and restore function using the USB connection
- Supports different industry protocols such as, for example Ethernet IP, Modbus TCP, Modbus RTU, FINS and Profibus DP
- Extremely high measuring frequency is possible, up to 1600 data strings/s
- Internal resolution 24 Bit
- Large display YKD-A02: only suitable for CE HSR

STANDARD



OPTION



ALL MODELS

Model	Input voltage unipolar	Input voltage bipolar	Maximum resolution d	Communication interface	Analogue current output
CE HSA	-1 mV to +16 mV	-16 mV to +16 mV	10.000	USB	0/4-20/24mA
CE HSE	-1 mV to +16 mV	-16 mV to +16 mV	10.000	USB, Ethernet	-
CE HSN	-1 mV to +16 mV	-16 mV to +16 mV	10.000	USB, Profinet	-
CE HSP	-1 mV to +16 mV	-16 mV to +16 mV	10.000	USB, Profibus	-
CE HSR	-1 mV to +16 mV	-16 mV to +16 mV	10.000	USB, RS232/422	-

VHP-T

Display device with integrated thermal transfer printer and rechargeable battery pack in stable, lined transport case



- 4 quick-release connectors to connect up to 4 weighing pads
- The weighing results from the individual weighing pads can be issued individually or cumulatively

STANDARD



ALL MODELS

Model	
VHP-T	

Digital weighing transmitter YKV

Modern, digital weighing transmitter for fast acquisition of weighing data and forwarding to a wide variety of output media such as tablets, networks, PLC controls etc. - ideal for operating balances in plants or conveyor systems



- With this A/D converter box your weighing processes are ready for the requirements of Industry 4.0. Simply connect a weighing platform or measuring cell, integrate the A/D converter box into the network and start weighing
- For rapid transfer of weighing data to connected networks, computers, etc.
- USB- and RS-232 Data interface standard
- Transfer formats are freely configurable
- Many interface variants available:
 - WLAN interface, KERN YKV-A01
 - Bluetooth data interface, KERN YKV-A02
 - Other interfaces on request
 - A/D converter box with Ethernet data interface as standard on request
- functions: Weighing, Tare off
- Internal Resolution 16 million divisions
- Measuring frequency 10 Hz
- Easy configuration using the software supplied
- Robust plastic die-cast housing
- **1** Suitable for wall mounting and DIN track mount
- Compatible with all KERN weighing platforms
- Included in the scope of supply:
 - A/D converter box KERN YKV-01
 - **2** Software BalanceConnection for adjusting and managing the KERN YKV-01, for large-format display of the values collected on the PC as well as transfer of this data to other apps and programs
- **3** only KERN YKV-02: Ethernet interface standard
- Watch the KCP information film

STANDARD



FACTORY



3

ALL MODELS

	Model
YKV-01	
YKV-02	

Analogue weighing transmitter CE-WT

Analogue weighing transmitter to amplify the DMS signal with current or voltage output



- Voltage supply 12V or 24V
- Output signal voltage or current
- Suitable for transfer to SPS, analogue measuring card etc.
- Integrated overvoltage protection
- Polarity reversal protection at the input and protection of the output
- CE WT1-Y4 and CE WT2-Y4: up to 4 sensors connectable without junction box
- Scope of delivery: weighing transmitter, connection plug for sensor, cable incl. plug for output signal and power supply
- 12V DC or 24V DC voltage source (depending on model) required (e.g. for 24V voltage source CE is HSS compatible)
- Compatible with all analogue SAUTER load cells and analogue KERN weighing platforms

STANDARD



ALL MODELS

Model	Sensor connections	Supply voltage	Housing	Class of protection
CE WT1-Y1	1	12 V	Steel plate	IP54
CE WT2-Y1	1	24V	Steel plate	IP54
CE WT3-Y1	1	12V	Steel plate	IP54
CE WT4-Y1	1	24V	Steel plate	IP54
CE WT1-Y2	1	12V	Aluminium	IP65
CE WT2-Y2	1	24V	Aluminium	IP65
CE WT1-Y4	4	12V	Aluminium	IP65
CE WT2-Y4	4	24V	Aluminium	IP65

Platform KFP-V20 IP65

Platform with stainless steel weighing plate and IP65

Platform KERN KFP-V20 IP65



- Stainless steel weighing plate, Painted steel base
- 1 load cell, aluminium, silicone-coated, IP65, OIML-R60-approved, class III, 3000 e
- Level indicator and levelling feet for precise levelling of the scale, fitted as standard, to give the most accurate weighing result

STANDARD

FACTORY



KFP 600

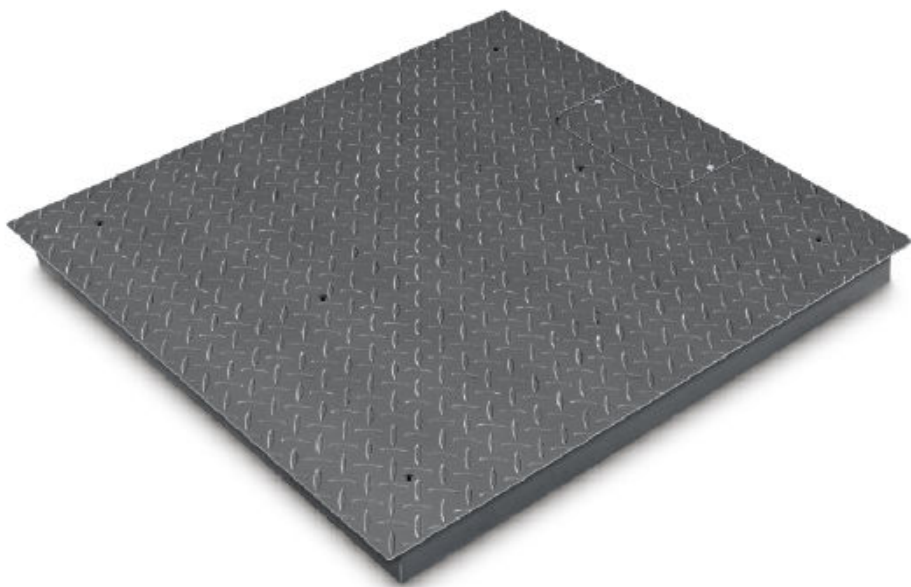
ALL MODELS

Model	Weighing capacity [Max] kg	Read-ability [d] g	Verific. value [e] g	Minimum load [Min] g
KFP 3V20M	3	0,1	1	20
KFP 6V20M	6	0,2	1 2	20 40
KFP 6V20LM	6	0,2	1 2	20 40
KFP 15V20M	6 15	0,5	2 5	40 100
KFP 15V20LM	6 15	0,5	2 5	40 100

Model	Weighing capacity [Max] kg	Read- ability [d] g	Verific. value [e] g	Minimum load [Min] g
KFP 30V20M	15 30	1	5 10	100 200
KFP 30V20SM	15 30	1	5 10	100 200
KFP 60V20M	30 60	2	10 20	200 400
KFP 60V20LM	30 60	2	10 20	200 400
KFP 150V20M-2021a	60 150	5	20 50	400 1000
KFP 150V20LM	60 150	5	20 50	400 1000
KFP 300V20M	150 300	10	50 100	1000 2000
KFP 600V20AM	600	20	200	4000

Weighing bridge KIP-V20

Weighing bridge with IP67



- Weighing bridge with non-slip steel chequer plate, lacquered, welded
- 4 load cells, steel, silicone-coated, IP67, OIML-R60-approved, class III, 3000 e
- Can be built in using pit frames (optional)
- Level indicator and levelling feet for precise levelling of the scale, fitted as standard, to give the most accurate weighing result
- Easy access to the junction box from the top
- Comfortable adjustment of the weighing bridge from above

STANDARD FACTORY



ALL MODELS

Model	Weighing range [Max] kg	Readout [d] g	Verific. value [e] g	Minimum load [Min] g	Weighing plate mm
KIP 600V20SM	600	200	200	4000	1000 1000 108
KIP 600V20M	600	200	200	4000	1200 1500 108
KIP 1500V20SM	1500	500	500	10000	1000 1000 108
KIP 1500V20EM	1500	500	500	10000	1200 1000 108

Model	Weighing range [Max] kg	Readout [d] g	Verific. value [e] g	Minimum load [Min] g	Weighing plate mm
KIP 1500V20M	1500	500	500	10000	1200 1500 108
KIP 3000V20M	3000	1000	1000	20000	1200 1500 108
KIP 3000V20LM	3000	1000	1000	20000	1500 1500 108

Weighing bridge KXP-V20 IP67

Weighing bridge made of non-slip steel chequer plate, lacquered with IP67



STANDARD



IP 65



2 DAYS



ALL MODELS

Model

KXP 600V20SM

KXP 600V20M

KXP 1500V20SM

KXP 1500V20M

KXP 3000V20M

Platform KFA

Weighing beams with IP67 protection

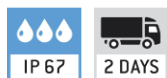


- Weighing beams steel lacquered
- 4 load cells, steel, silicone-coated, IP67
- Foot screws to level the weighing beams precisely

Version up to 6 t available. Each weighing beam has a roller and handle for easy transport of the scale (KFA-L)

- NEW: new model with short weighing beams, ideal for weighing compact items or animals in transport boxes: KERN KFA-600V20S

STANDARD



ALL MODELS

Model	Weighing capacity [Max] kg	Readability [d] g
KFA 600V20S	600	200
KFA 1500V20-2021a	1500	500
KFA 3000V20	3000	1000
KFA 3000V20L	3000	1000
KFA 6000V20	6000	2000
KFA 6000V20L	6000	2000

U-shaped weighing bridge KFU-V20

U-shaped weighing bridge



- Load area steel lacquered
- 4 load cells, steel, silicone-coated, IP67, OIML-R60-approved, class III, 3000 e
- 2 rollers and handle for easy transport of the scale
- Level indicator and levelling feet for precise levelling of the scale, fitted as standard, to give the most accurate weighing result

STANDARD FACTORY



ALL MODELS

Model	Weighing capacity [Max] kg	Readability [d] g	Verification value [e] g
KFU 600V20M	600	200	200
KFU 1500V20M	1500	500	500

Platform KFP-V30

Stainless steel platform



- Stainless steel weighing plate
- stainless steel substructure
- 1 load cell, stainless steel, silicone-coated, IP67, OIML-R60-approved, class III, 3000 e
- Level indicator and levelling feet for precise levelling of the scale, fitted as standard, to give the most accurate weighing result

STANDARD FACTORY



ALL MODELS

Model	Weighing range [Max] kg	Readout [d] g	Verific. value [e] g	Minimum load [Min] g	Preload additive kg	Net weight approx. kg	Weighing plate mm
KFP 15V30M	15	0,5	5	100	2	5	300×240×100
KFP 30V30M	30	1	10	200	5	7,2	400×300×128
KFP 30V30SM	30	10	10	200	5	5	300×240×100
KFP 60V30M	60	2	20	400	5	7,2	400×300×128
KFP 60V30LM	60	2	20	400	7	13,3	500×400×110
KFP 60V30XLM	60	2	20	400	10	22	650×500×142
KFP 150V30SM	150	5	50	1000	5	9,7	400×300×128
KFP 150V30M	150	5	50	1000	7	9,8	500×400×137

Model	Weighing range [Max] kg	Readout [d] g	Verific. value [e] g	Minimum load [Min] g	Preload additive kg	Net weight approx. kg	Weighing plate mm
KFP 150V30LM	150	5	50	1000	10	22	650×500×135
KFP 300V30M	300	10	100	2000	10	22	650×500×135

Platform KFP-V40

Stainless steel platform with IP68 protection



- Weighing bridge entirely out of stainless steel, extremely resistant to bending because of its high material thickness
- Weighing plate fixed with stainless steel screws, so that it is easier to access the loadcells from above
- 4 load cells, stainless steel, encapsulated, IP68, OIML-R60-approved, class III, 3000 e
- Can be built in using pit frames (optional)
- Level indicator and levelling feet for precise levelling of the scale, fitted as standard, to give the most accurate weighing result
- Comfortable adjustment of the weighing bridge from above

STANDARD FACTORY



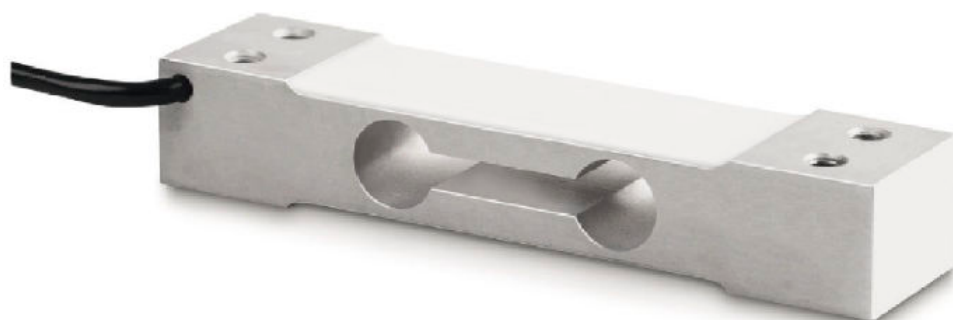
ALL MODELS

Model	Weighing capacity [Max] kg	Readability [d] g	Verification value [e] g	Minimum load [Min] g
KFP 600V40SM	600	200	200	4000

Model	Weighing capacity [Max] kg	Readability [d] g	Verification value [e] g	Minimum load [Min] g
KFP 1500V40SM	1500	500	500	10000
KFP 1500V40M	1500	500	500	10000
KFP 3000V40M	3000	1000	1000	20000

Singlepoint load cell CP-P1

Single-point load cells made of anodised aluminium



- Accuracy in accordance with OIML R60 C3
- CE and RoHS compliant
- protection against dust and water splashes IP65 (in accordance with EN 60529)
- Aluminium, anodised
- Suitable for price-computing scales, bench scales, platform scales, etc.
- Maximum platform size 250×350 mm
- 4-wire connection
- Nominal sensitivity: 2 mV/V
- Note: Version in accordance with OIML R60 C4 or C5 on request

STANDARD OPTION



ALL MODELS

**Nominal
load**

kg

Model	
CP 3-3P1	3
CP 5-3P1	5
CP 6-3P1	6
CP 8-3P1	8
CP 10-3P1	10
CP 15-3P1	15
CP 20-3P1	20

Model		Nominal load
		kg
CP 30-3P1	30	
CP 35-3P1	35	
CP 40-3P1	40	
CP 50-3P1	50	

Singlepoint load cell CP-P2

Aluminium singlepoint load cell



- Accuracy in accordance with OIML R60 C3
- protection against dust and water splashes IP65 (in accordance with EN 60529)
- Aluminium alloy, anodized
- Suitable for price-computing scales, bench scales, platform scales, etc.
- Maximum platform size 100–300 kg: 400×400 mm
- Maximum platform size 400–500 kg: 450×450 mm
- Nominal sensitivity: 2 mV/V
- Note: Version in accordance with OIML R60 C4 or C5 on request

STANDARD



ALL MODELS

Model		Nominal load kg
CP 100-3P2	100	
CP 150-3P2	150	
CP 200-3P2	200	
CP 300-3P2	300	
CP 400-3P2	400	
CP 500-3P2	500	

Singlepoint load cell CP-P3

Single-point load cells made of anodised aluminium



- Accuracy in accordance with OIML R60 C3
- CE and RoHS compliant
- protection against dust and water splashes IP65 (in accordance with EN 60529)
- Suitable for price-computing scales, bench scales, platform scales, etc.
- Maximum platform size 2350×400 mm
- 4-wire connection
- Nominal sensitivity: 2 mV/V
- Note: Version in accordance with OIML R60 C4 on request

STANDARD



OPTION



ALL MODELS

Model		Nominal load
		kg
CP 30-3P3	30	
CP 40-3P3	40	
CP 50-3P3	50	
CP 75-3P3	75	
CP 100-3P3	100	

Singlepoint load cell CP-P4

Single-point load cells made of anodised aluminium



- CE and RoHS compliant
- Accuracy class L
- protection against dust and water splashes IP65 (in accordance with EN 60529)
- Aluminium, anodised
- Suitable for price-computing scales, bench scales, platform scales, etc.
- Maximum platform size 200×200 mm
- 4-wire connection
- Nominal sensitivity: 0,9 mV/V

STANDARD

OPTION



ALL MODELS

Model		Nominal load
		kg
CP 300-0P4		0,3
CP 600-0P4		0,6

Singlepoint load cell CP-P7

Single-point load cells made of stainless steel



- Accuracy in accordance with OIML R60 C3
- RoHS compliant
- protection against dust and water splashes IP67 (in accordance with EN 60529)
- Area of application: Mass as well as compressive force measurement in harsh environmental conditions
- Suitable for bench scales, price computing scales
- Maximum platform size 400×400 mm
- 6-wire connection
- Nominal sensitivity: 2 mV/V
- Note: Version in accordance with OIML R60 C4 on request

STANDARD OPTION



ALL MODELS

Model		Nominal load
		kg
CP 30-3P7	30	
CP 50-3P7	50	
CP 75-3P7	75	
CP 100-3P7	100	
CP 150-3P7	150	

Singlepoint load cell CP-P9

Single-point load cells made of stainless steel with IP69K protection



- Accuracy in accordance with OIML R60 C3
- Dust and spray protection to IP68/IP69K (in accordance with EN 60529), welded to create a hermetic seal
- Stainless steel
- Area of application: Measuring mass as well as compressive force in harsh environments
- Suitable for Platform scales, Checkweighing
- Maximum platform size 10–50 kg
- : 400×400 mmMaximum platform size 100–500 kg: 800×800 mm
- 4-wire connection (10–50 kg
- 4-wire connection (100-500 kg)
- Nominal sensitivity: 2 mV/V
- Note: Version in accordance with OIML R60 C4 or C5 on request

STANDARD



ALL MODELS

Model		Nominal load
		kg
CP 10-3P9	10	
CP 20-3P9	20	
CP 50-3P9	50	
CP 100-3P9	100	
CP 200-3P9	200	
CP 300-3P9	300	
CP 400-3P9	400	
CP 500-3P9	500	

Load cell CD-P1

Load cells made of stainless steel



- Accuracy class C3
- protection against dust and water splashes IP68 (in accordance with EN 60529), hermetically encapsulated
- stainless steel
- Area of application: Measuring mass as well as compressive force
- Suitable for vehicle scales, weigh hoppers, vehicle testing equipment, test benches
- Note: EX version and accuracy class C4 on request
- Nominal sensitivity: 2 mV/V

STANDARD



ALL MODELS

Model	Nominal load
	kg
CD 10-3P1	10000

Model		Nominal load kg
CD 20-3P1		20000
CD 40-3P1		40000
CD 50-3P1		50000

Load cell CD-P2

Load cells made of stainless steel



- Accuracy in accordance with OIML R60 C3
- protection against dust and water splashes IP68 (in accordance with EN 60529), hermetically encapsulated
- Scope of application: tensile and compressive force measurement
- Suitable for vehicle scales, weigh hoppers, vehicle testing equipment, test benches, Hanging scales
- Nominal sensitivity: 1,5 mV/V

STANDARD



ALL MODELS

Model		Nominal load
CD 10-2P2		10 t/100 kN
CD 20-2P2		20 t/200 kN
CD 30-2P2		30 t/300 kN
CD 50-2P2		50 t/500 kN
CD 100-2P2		100 t/1000 kN

CB-Q1/CB-Q2

Bending beam loadcells made from stainless steel



- Accuracy in accordance with OIML R60 C3
- CE and RoHS compliant
- Dust and spray protection to IP68/IP69K (in accordance with EN 60529), welded to create a hermetic seal
- Stainless steel
- Area of application: Measuring mass as well as compressive force in harsh environments
- Suitable for platform scales, weigh hoppers, flush-mounted floor scales and other weighing devices
- 4-wire connection
- Nominal sensitivity: 2 mV/V
- Note: Accuracy class OIML R60 C6 or EX version on request

STANDARD



ALL MODELS

Model	Nominal load	
	kg	
CB 5-3Q1	5	
CB 10-3Q1	10	
CB 20-3Q1	20	
CB 30-3Q1	30	
CB 50-3Q1	50	

		Nominal load	
Model		kg	
CB 75-3Q1	75		
CB 100-3Q1	100		
CB 150-3Q1	150		
CB 200-3Q1	200		
CB 250-3Q1	250		
CB 300-3Q1	300		
CB 500-3Q1	500		
CB 750-3Q2	750		
CB 1000-3Q2	1000		
CB 1500-3Q2	1500		

CB-P1

Bending beams made from stainless steel



- Accuracy in accordance with OIML R60 C3
- CE and RoHS compliant
- protection against dust and water splashes IP67 (in accordance with EN 60529), hermetically encapsulated
- Nickel-plated steel
- Area of application: Measuring mass as well as compressive force in harsh environments
- Suitable for platform scales, silo scales, bed scales and other diverse scales
- 4-wire connection
- Nominal sensitivity: 3 mV/V

ALL MODELS

Model		Nominal load	Price
		kg	
CB 100-3P1	100		€ 114,00 *
CB 250-3P1	250		€ 114,00 *

Shear beam measuring cell CT-Q1

Shear beam measuring cells made from stainless steel with IP69K protection



- Accuracy in accordance with OIML R60 C3
- CE and RoHS compliant
- Dust and spray protection to IP68/IP69K (in accordance with EN 60529), welded to create a hermetic seal
- Stainless steel
- Area of application: Measuring mass as well as compressive force in harsh environments
- Suitable for platform scales, weigh hoppers, flush-mounted floor scales and other weighing devices
- 6-wire connection
- Nominal sensitivity: 2 mV/V
- Note: EX version on request

STANDARD

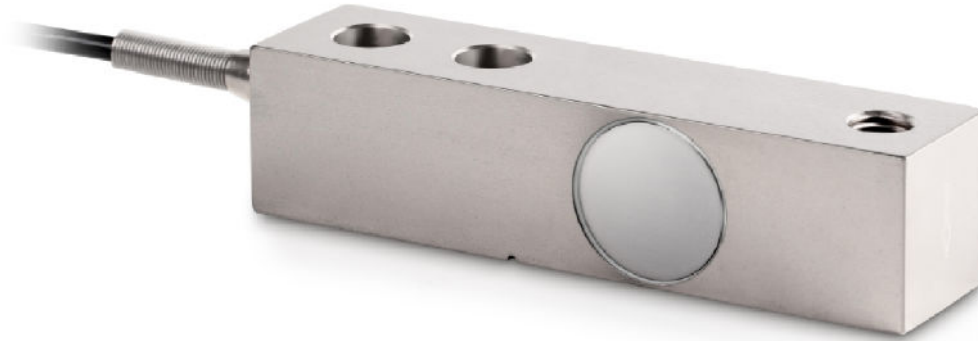


ALL MODELS

Model		Nominal load
		kg
CT 300-3Q1	300	
CT 500-3Q1	500	
CT 750-3Q1	750	
CT 1000-3Q1	1000	
CT 1500-3Q1	1500	
CT 2000-3Q1	2000	
CT 3000-3Q1	3000	
CT 5000-3Q1	5000	
CT 7500-3Q1	7500	
CT 10000-3Q1	10000	

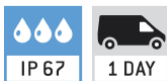
Shear beam measuring cell CT-P1/CT-P2

Measuring cells made from stainless steel



- Accuracy in accordance with OIML R60 C3
- CE and RoHS compliant
- protection against dust and water splashes IP67 (in accordance with EN 60529), hermetic seal
- Nickel-plated steel
- Area of application: Measuring mass as well as compressive force in harsh environments
- Suitable for platform scales, weigh hoppers, flush-mounted floor scales and other weighing devices
- 4-wire connection
- Nominal sensitivity: 3 mV/V
- Note: EX version, 6-wire connection and accuracy class C4 or C5 on request

STANDARD



ALL MODELS

Model		Nominal load
		kg
CT 500-3P1	500	
CT 1000-3P1	1000	
CT 1500-3P1	1500	
CT 2500-3P1	2500	
CT 3000-3P1	3000	
CT 5000-3P1	5000	
CT 10000-3P1	10000	

Mit abgeglichenem Kennwert bei Bestellung von mehreren Zellen

Model		Nominal load kg
CT 500-3P2		500
CT 1000-3P2		1000
CT 3000-3P2		3000
CT 5000-3P2		5000
CT 10000-3P2		10000

Measuring cell CK-P1-4

Miniature load cells made of aluminium



CK-P1

- protection against dust and water splashes IP65 (in accordance with EN 60529)
- Aluminium
- High level of accuracy
- Suitable for small scales and kitchen scales and force-measuring devices
- 4-wire connection

STANDARD



ALL MODELS

Model	Nominal load kg
CK 600-0P1	0,6
CK 1-0P1	1
CK 2-0P1	2
CK 3-0P1	3
CK 5-0P1	5
CK 6-0P1	6
CK 300-0P2	0,3
CK 600-0P2	0,6
CK 1000-0P3	1

	Model		Nominal load
			kg
CK 100-0P4		0,1	
CK 120-0P4		0,12	
CK 300-0P4		0,3	
CK 500-0P4		0,5	

CJ-P

junction box CJ-P



- Prepared for 4-wire and 6-wire measuring cells
- Models available for 2, 4, 6 or 8 load cells
- The robust aluminium cast housing maintains the stability, protects the weighing technology elements and is robust enough to cope with everyday use with protection against dust and water splashes IP65

STANDARD



ALL MODELS

Model		Number of connection possibilities
CJ P2	2	
CJ P4	4	
CJ P4PG	4	
CJ P6	6	
CJ P8	8	

Torque sensor CJ-X

Junction box for the connection of several measuring cells to an evaluation unit



CJ X467

- Prepared for 4-wire and 6-wire measuring cells
- Models available for 2, 4, 6 or 8 load cells

CJ X467

- Robust housing made from stainless steel with protection against dust and spray to IP67

CJ X468

- Robust aluminium die-cast housing with protection against dust and spray to IP68

STANDARD



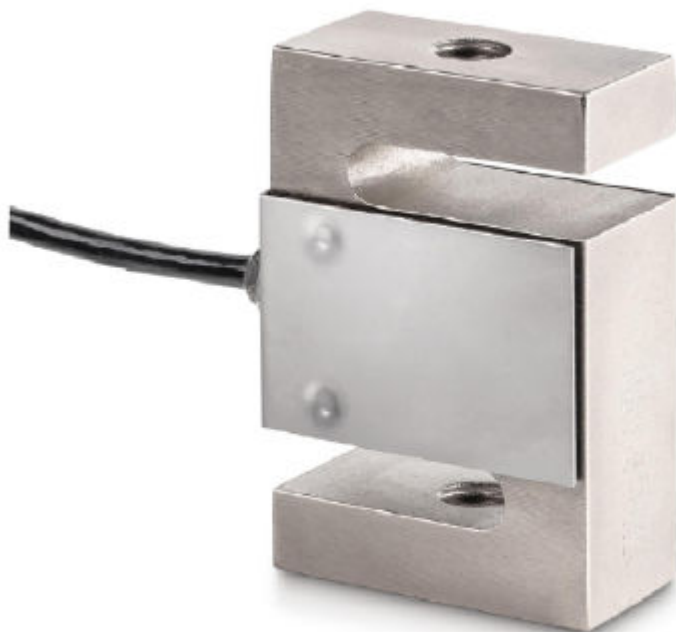
CJ X467 CJ X468

ALL MODELS

Model		Number of connection possibilities
CJ X467	2	
CJ X468	4	

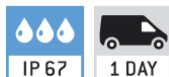
“S” measuring cell CS-P1

4 wire “S” measuring cells for force and mass measurement



- Accuracy in accordance with OIML R60 C3 class C3
- protection against dust and water splashes IP67 (in accordance with EN 60529), hermetic seal
- Nickel-plated steel
- Scope of application: for tensile and compressive force measurement
- Suitable for handling scales, weigh hoppers and other weighing devices as well as force measurement devices and test benches
- 4-wire connection
- Note: EX version and accuracy class C4 on request
- Nominal sensitivity: 2 mV/V

STANDARD



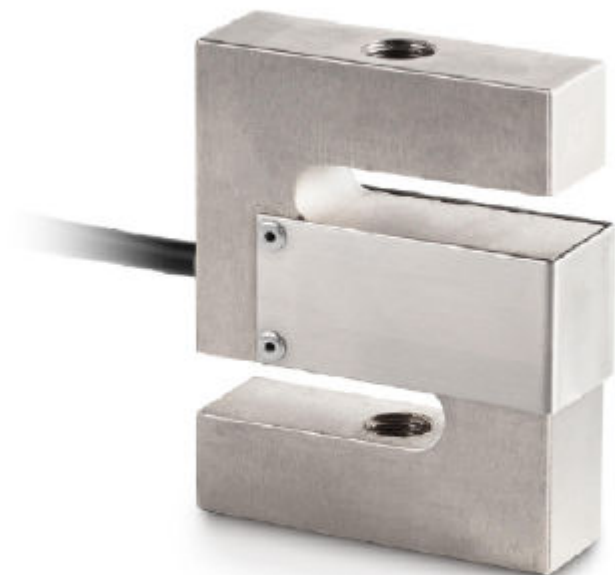
ALL MODELS

Model	Nominal load
	kg

Model		Nominal load kg
CS 25-3P1		25
CS 50-3P1		50
CS 100-3P1		100
CS 150-3P1		150
CS 250-3P1		250
CS 500-3P1		500
CS 600-3P1		600
CS 750-3P1		750
CS 1000-3P1		1000
CS 1500-3P1		1500
CS 2000-3P1		2000
CS 2500-3P1		2500
CS 5000-3P1		5000
CS 7500-3P1		7500
CS 10000-3P1		10000
CS 15000-3P1		15000
CS 20000-3P1		20000
CS 30000-3P1		30000

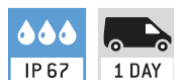
“S” measuring cell CS-Q1

6 wire “S” measuring cells for force and mass measurement



- Accuracy class C3
- protection against dust and water splashes IP67 (in accordance with EN 60529, hermetically encapsulated)
- Scope of application: for tensile and compressive force measurement
- Suitable for handling scales, weigh hoppers and other weighing devices as well as force measurement devices and test benches
- 6-wire connection
- Nominal sensitivity: 2 mV/V

STANDARD



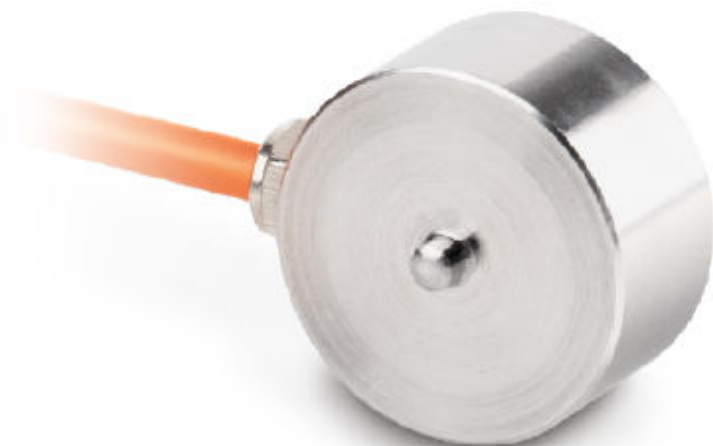
ALL MODELS

Model	Nominal load	kg
CS 50-3Q1	50	
CS 100-3Q1	100	

		Nominal load	
Model		kg	
CS 150-3Q1	150		
CS 200-3Q1	200		
CS 300-3Q1	300		
CS 500-3Q1	500		
CS 750-3Q1	750		
CS 1000-3Q1	1000		
CS 1500-3Q1	1500		
CS 2000-3Q1	2000		
CS 3000-3Q1	3000		
CS 5000-3Q1	5000		
CS 6000-3Q1	6000		

Measuring cell CO-Y1

Miniature button-type measuring cells made of stainless steel



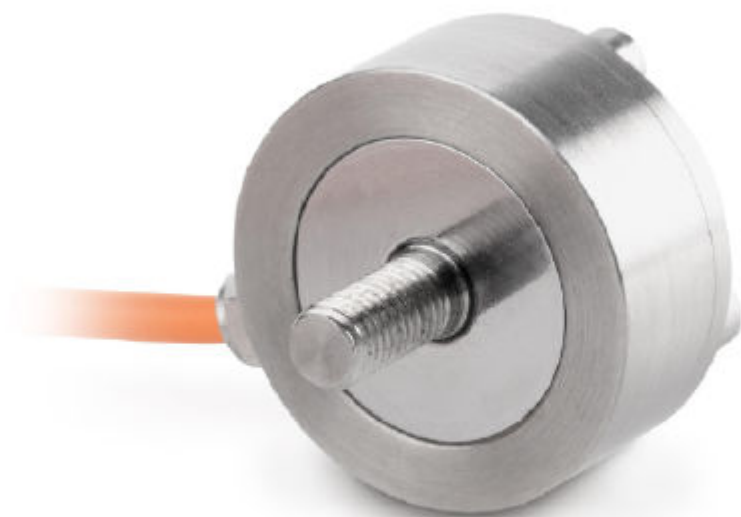
- RoHS compliant
- protection against dust and water splashes IP67
- Miniature button-type measuring cells made of stainless steel
- Area of application: Compressive applications
- Ideal for weight and force measurement and force test benches

ALL MODELS

Model	Nominal load
CO 10-Y1	10 kg/100 N
CO 20-Y1	20 kg/200 N
CO 50-Y1	50 kg/500 N
CO 100-Y1	100 kg/1 kN
CO 200-Y1	200 kg/n kN
CO 500-Y1	500 kg/5 kN
CO 1000-Y1	1000 kg/10 kN
CO 2000-Y1	2000 kg/20 kN

Measuring cell CO-Y2

Miniature button-type measuring cells made of stainless steel



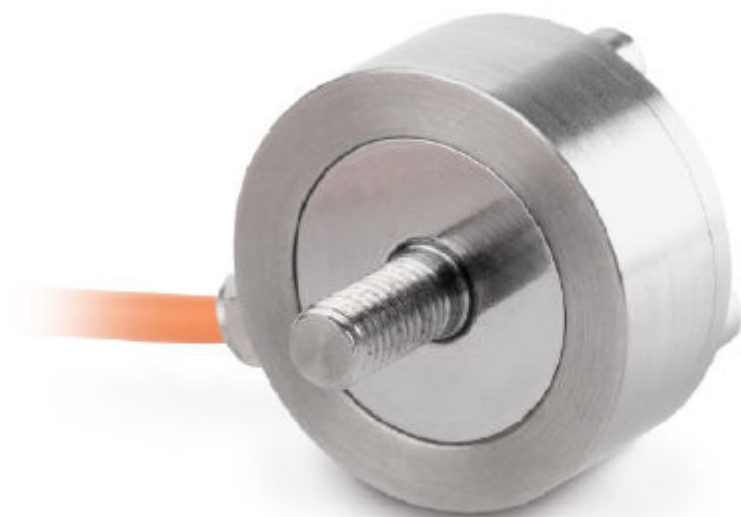
- RoHS compliant
 - protection against dust and water splashes IP66/IP67
 - Area of application: Tensile and compressive applications
- Ideal for weight and force measurement and force test benches

ALL MODELS

Model		Nominal load
CO 10-Y2		10 kg/100 N
CO 20-Y2		20 kg/200 N
CO 50-Y2		50 kg/500 N
CO 100-Y2		100 kg/1 kN
CO 200-Y2		200 kg/n kN
CO 500-Y2		500 kg/5 kN
CO 1000-Y2		1000 kg/10 kN
CO 2000-Y2		2000 kg/20 kN

Measuring cell CO-Y3

Miniature button-type measuring cells made of stainless steel



- RoHS compliant
- protection against dust and water splashes IP66/IP67
- Area of application: Tensile and compressive applications
- Ideal for weight and force measurement and force test benches

ALL MODELS

Model		Nominal load
CO 5-Y3		5 kg/50 N
CO 10-Y3		10 kg/100 N

Measuring cell CO-Y4

Miniature button-type measuring cells made of stainless steel



- RoHS compliant
- protection against dust and water splashes IP66/IP67
- Area of application: Compressive applications
- Ideal for weight and force measurement and force test benches

ALL MODELS

Model		Nominal load
CO 5-Y4		5 kg/50 N
CO 10-Y4		10 kg/100 N

Measuring cell CO-Y5

Tension and compression measuring cells made from stainless steel

NEW



- Accuracy in accordance with OIML R60 G1
- CE and RoHS compliant
- protection against dust and water splashes IP66 (in accordance with EN 60529)
- Stainless steel
- Very low design
- Suitable for Test stands, force gauges
- 4-wire connection

STANDARD

OPTION

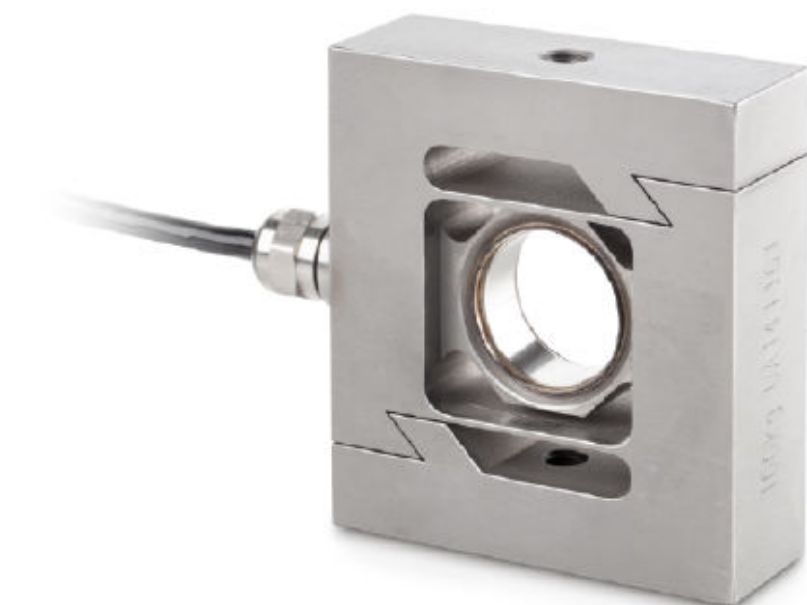


ALL MODELS

Model	Nominal load	Nominal sensitivity
CO 0.5-Y5	0,5 kg/5 N	1 mV/V
CO 1-Y5	1 kg/10 N	1 mV/V
CO 5-Y5	5 kg/50 N	2 mV/V
CO 10-Y5	10 kg/100 N	2 mV/V

Measuring cell CS-P2

S measuring cells and S load cells made from stainless steel



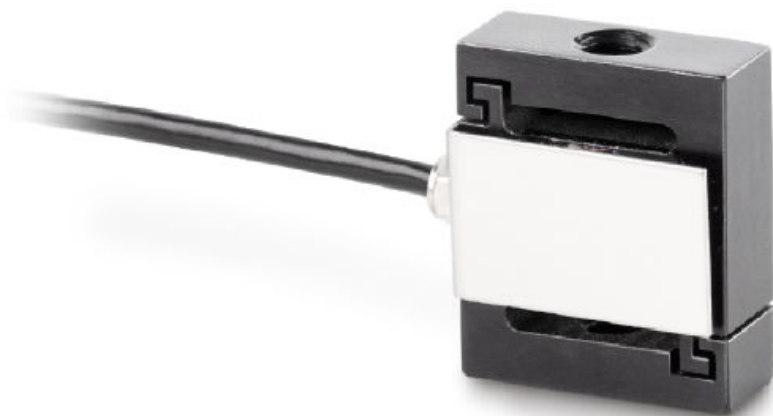
- Accuracy class C3
- RoHS compliant
- protection against dust and water splashes IP68
- S measuring cells and S load cells made from stainless steel
- Area of application: Measuring mass as well as compressive force
- Suitable for hanging scales, silo scales, force test benches and other types of balances

ALL MODELS

Model	Nominal load
CS 50-3P2	50 kg/500 N
CS 100-3P2	100 kg/1 kN
CS 250-3P2	250 kg/2,5 kN
CS 500-3P2	500 kg/5 kN
CS 1000-3P2	1000 kg/10 kN
CS 2000-3P2	2000 kg/20 kN
CS 5000-3P2	5000 kg/50 kN
CS 7500-3P2	7500 kg/75 kN

Measuring cell CS-Y1

Miniature S measuring cells and S load cells

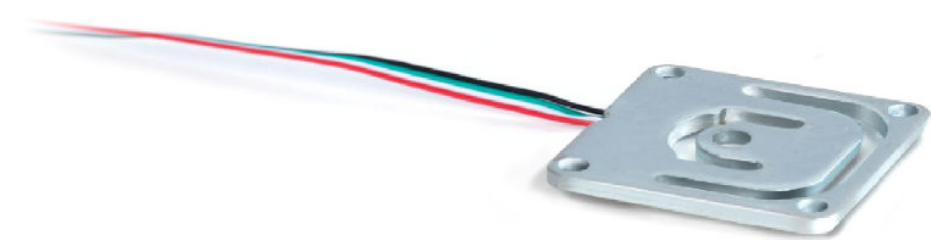


- RoHS compliant
- protection against dust and water splashes IP65
- S measuring cells and S load cells made from stainless steel
- Area of application: Tensile and compressive applications , weight and force measurement
- Suitable for hanging scales, silo scales, force test benches and other types of balances

ALL MODELS

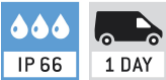
Model	Nominal load
CS 1-Y1	1 kg/10 N
CS 2-Y1	2 kg/20 N
CS 5-Y1	5 kg/50 N
CS 10-Y1	10 kg/100 N
CS 20-Y1	20 kg/200 N

Measuring cell CK-Y1



- Accuracy in accordance with OIML C1
- RoHS compliant
- High precision (comprehensive Error 0,05 % F.S.)
- Very low design
- Suitable for e.g. personal scales, kitchen scales, post scales or other scales with lowest installation height
- protection against dust and water splashes IP66
- Scope of delivery: 1 piece

STANDARD



ALL MODELS

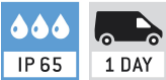
Model		Nominal load
CK 10-Y1		10 kg
CK 30-Y1		30 kg

Measuring cell CK-Y4



- Accuracy in accordance with OIML C1
- RoHS compliant
- High precision (comprehensive Error 0,05 % F.S.)
- Very low design
- Suitable for e.g. personal scales, kitchen scales, post scales or other scales with lowest installation height
- protection against dust and water splashes IP65
- Scope of delivery: 1 set (4 pieces)
- Quarter-bridge circuit: 4 load cells are connected to a full-bridge
- No junction box required
- Corner adjustment not possible

STANDARD



ALL MODELS

Model		Nominal load
CK 10-Y4		10 kg
CK 30-Y4		30 kg
CK 50-Y4		50 kg

Measuring cell CR-Y1

Load cells made of alloyed steel



- High precision (comprehensive Error 0,05 % F.S.)
- Accuracy in accordance with OIML R60 C1
- RoHS compliant
- protection against dust and water splashes IP68 (in accordance with EN 60529), hermetically encapsulated
- Stainless steel
- Area of application: for weight, tensile and compressive force measurement
- Suitable for weight measurement as well as force and force test benches
- Force transmission via pressure piece or threaded hole
- Nominal sensitivity: 2 mV/V
- Pressure piece included with delivery
- Thread for pressure piece or other force application: up to 5000 kg M16×1,5, from 10000 kg M32×1,5

STANDARD OPTION



ALL MODELS

Model	Nominal load
CR 500-1Y1	10 t/100 kN
CR 1000-1Y1	20 t/200 kN
CR 5000-1Y1	30 t/300 kN
CR 10000-1Y1	50 t/500 kN
CR 20000-1Y1	100 t/1000 kN

Measuring cell CP-Y4

Single-point load cells made of anodised aluminium



- Accuracy in accordance with OIML R60 C2
- CE and RoHS compliant
- protection against dust and water splashes IP65
- Aluminium, anodised
- Suitable for price-computing scales, bench scales, platform scales, etc.
- Maximum platform size 200×200 mm
- 4-wire connection
- Nominal sensitivity: 0,9 mV/V

STANDARD



OPTION

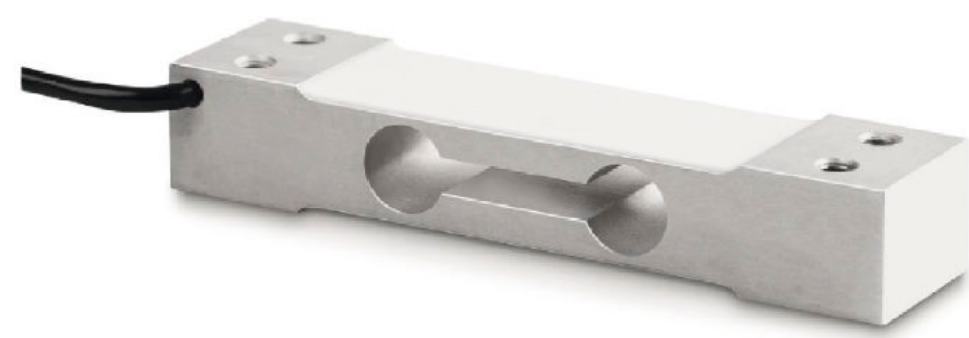


ALL MODELS

Model		Nominal load
		kg
CP 300-0Y4		0,3
CP 1500-0Y4		1,5
CP 3000-0Y4		3

Measuring cell CP-Y1

Single-point load cells made of anodised aluminium



- Accuracy in accordance with OIML R60 C2
- CE and RoHS compliant
- protection against dust and water splashes IP65
- Aluminium, anodised
- Suitable for price-computing scales, bench scales, platform scales, etc.
- Maximum platform size 250×350 mm
- 4-wire connection
- Nominal sensitivity: 2 mV/V
- Note: Version in accordance with OIML R60 C4 or C5 on request

STANDARD



OPTION

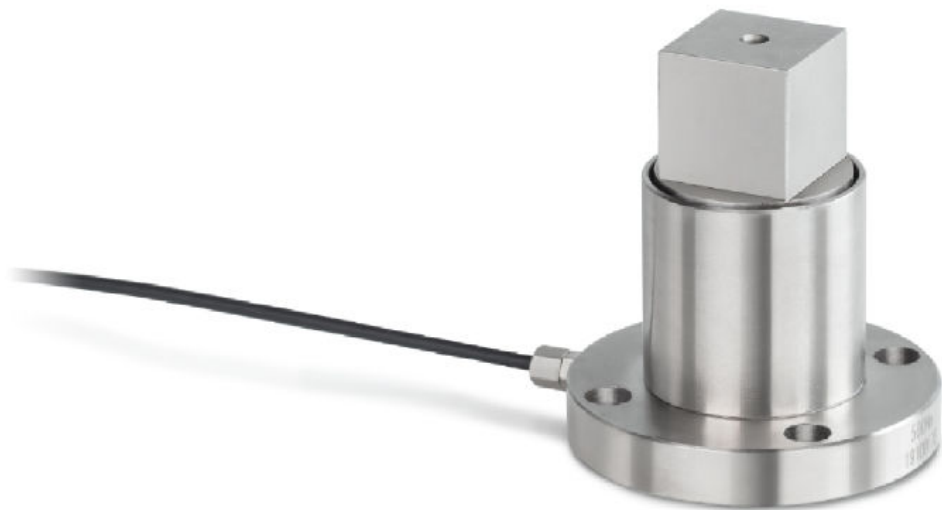


ALL MODELS

Model		Nominal load
		kg
CP 3-2Y1	3	
CP 5-2Y1	5	
CP 10-2Y1	10	
CP 15-2Y1	15	
CP 20-2Y1	20	
CP 30-2Y1	30	

Static torque sensors DC-Y1

Static torque sensor made from alloy steel



- High precision (comprehensive Error 0,5 % F.S.)
- RoHS compliant
- Suitable for monitoring or measuring static torques, testing manual torque wrenches or transmitting static load torques
- Rated sensitivity 1.0~1.5 mV/V (depending on rated load)
- Rated sensitivity 1.0~1.5 mV/V (depending on rated load) 10 V DC
- 4-wire connection
- Simple and quick installation
- High torsional stiffness
- Other designs and nominal loads on request

STANDARD OPTION



ALL MODELS

Model		Nominal load
		kg
DC 5-Y1	5 Nm	
DC 10-Y1	10 Nm	
DC 20-Y1	20 Nm	
DC 50-Y1	50 Nm	
DC 100-Y1	100 Nm	
DC 200-Y1	200 Nm	
DC 500-Y1	500 Nm	

Static torque sensors DC-Y2

Static torque sensor made from alloy steel



- High precision (comprehensive Error 0,3 % F.S.)
- RoHS compliant
- protection against dust and water splashes IP65
- Suitable for monitoring or measuring static torques, testing manual torque wrenches or transmitting static load torques
- Nominal sensitivity: 1,5 mV/V
- Supply voltage max. 15 V DC
- 4-wire connection
- High torsional stiffness
- Other designs and nominal loads on request

STANDARD OPTION



ALL MODELS

Model	Nominal load
	kg

Model		Nominal load kg
DC 200M-Y2		0,2 Nm
DC 1-Y2		1 Nm
DC 10-Y2		10 Nm
DC 20-Y2		20 Nm
DC 50-Y2		50 Nm

По вопросам продаж и поддержки обращайтесь:

Алматы (7273)495-231	Калининград (4012)72-03-81	Омск (3812)21-46-40	Сыктывкар (8212)25-95-17
Ангарск (3955)60-70-56	Калуга (4842)92-23-67	Орел (4862)44-53-42	Тамбов (4752)50-40-97
Архангельск (8182)63-90-72	Кемерово (3842)65-04-62	Оренбург (3532)37-68-04	Тверь (4822)63-31-35
Астрахань (8512)99-46-04	Киров (8332)68-02-04	Пенза (8412)22-31-16	Тольятти (8482)63-91-07
Барнаул (3852)73-04-60	Коломна (4966)23-41-49	Петрозаводск (8142)55-98-37	Томск (3822)98-41-53
Белгород (4722)40-23-64	Кострома (4942)77-07-48	Псков (8112)59-10-37	Тула (4872)33-79-87
Благовещенск (4162)22-76-07	Краснодар (861)203-40-90	Пермь (342)205-81-47	Тюмень (3452)66-21-18
Брянск (4832)59-03-52	Красноярск (391)204-63-61	Ростов-на-Дону (863)308-18-15	Ульяновск (8422)24-23-59
Владивосток (423)249-28-31	Курск (4712)77-13-04	Рязань (4912)46-61-64	Улан-Удэ (3012)59-97-51
Владикавказ (8672)28-90-48	Курган (3522)50-90-47	Самара (846)206-03-16	Уфа (347)229-48-12
Владимир (4922)49-43-18	Липецк (4742)52-20-81	Саранск (8342)22-96-24	Хабаровск (4212)92-98-04
Волгоград (844)278-03-48	Магнитогорск (3519)55-03-13	Санкт-Петербург (812)309-46-40	Чебоксары (8352)28-53-07
Вологда (8172)26-41-59	Москва (495)268-04-70	Саратов (845)249-38-78	Челябинск (351)202-03-61
Воронеж (473)204-51-73	Мурманск (8152)59-64-93	Севастополь (8692)22-31-93	Череповец (8202)49-02-64
Екатеринбург (343)384-55-89	Набережные Челны (8552)20-53-41	Симферополь (3652)67-13-56	Чита (3022)38-34-83
Иваново (4932)77-34-06	Нижний Новгород (831)429-08-12	Смоленск (4812)29-41-54	Якутск (4112)23-90-97
Ижевск (3412)26-03-58	Новокузнецк (3843)20-46-81	Сочи (862)225-72-31	Ярославль (4852)69-52-93
Иркутск (395)279-98-46	Ноябрьск (3496)41-32-12	Ставрополь (8652)20-65-13	
Казань (843)206-01-48	Новосибирск (383)227-86-73	Сургут (3462)77-98-35	
Россия +7(495)268-04-70	Киргизия +996(312)-96-26-47	Казахстан +7(7172)727-132	